

## Product datasheet for **TA306339**

### **BCL2A1 Rabbit Polyclonal Antibody**

#### **Product data:**

Product Type:	Primary Antibodies
Applications:	IF, IHC, WB
Recommended Dilution:	WB: 0.5 - 2 ug/mL, ICC: 10 ug/mL, IF: 20 ug/mL
Reactivity:	Human, Mouse
Host:	Rabbit
Isotype:	IgG
Clonality:	Polyclonal
Immunogen:	Bfl-1 antibody was raised against a 14 amino acid peptide from near the carboxy terminus of human Bfl-1.
Formulation:	PBS containing 0.02% sodium azide.
Concentration:	1ug/ul
Purification:	Affinity chromatography purified via peptide column
Conjugation:	Unconjugated
Storage:	Store at -20°C as received.
Stability:	Stable for 12 months from date of receipt.
Gene Name:	BCL2 related protein A1
Database Link:	<a href="#">NP_004040</a> <a href="#">Entrez Gene 597 Human</a> <a href="#">Q16548</a>



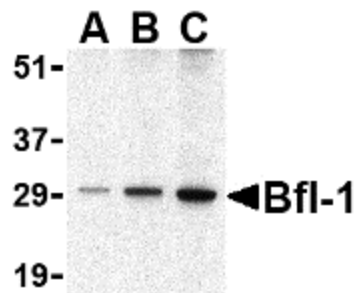
[View online »](#)

**Background:**

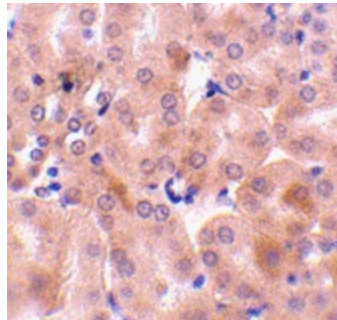
Apoptosis plays a major role in normal organism development, tissue homeostasis, and removal of damaged cells and is caused by caspase activation. Proteins that comprise the Bcl-2 family appear to control the activation of these enzymes. One such member is multi-domain antiapoptotic protein Bfl-1, which is overexpressed in stomach and other cancers. Bfl-1 can interact with Bax and suppress apoptosis by inhibiting the release of cytochrome c and caspase-3 activation. It is upregulated in cisplatin-resistant human bladder tumor, suggesting that its expression may be important for cisplatin resistance and inhibition of apoptosis in cancer cells. At least two isoforms of Bfl-1 are known to exist. Presumably due to post-translational modifications, Bfl-1 is often observed at higher molecular weight in SDS-PAGE than its predicted molecular weight would suggest.

**Synonyms:**

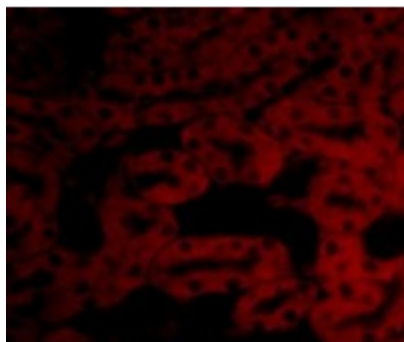
ACC-1; ACC-2; ACC1; ACC2; BCL2L5; BFL1; GRS; HBPA1

**Product images:**

Western blot analysis of Bfl-1 in human kidney tissue lysate with Bfl-1 antibody at (A) 0.5, (B) 1 and (C) 2 ug/ml.



Immunohistochemistry of Bfl-1 in mouse kidney tissue with Bfl-1 antibody at 10 ug/ml.



Immunofluorescence of Bfl-1 in Mouse Kidney tissue with Bfl-1 antibody at 20 ug/mL.