

Product datasheet for **TA306338**

BAG1 Rabbit Polyclonal Antibody

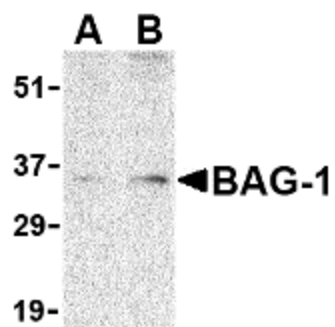
Product data:

Product Type:	Primary Antibodies
Applications:	IF, IHC, WB
Recommended Dilution:	WB: 1 - 2 ug/mL, ICC: 2 ug/mL, IF: 20 ug/mL
Reactivity:	Human, Mouse
Host:	Rabbit
Isotype:	IgG
Clonality:	Polyclonal
Immunogen:	BAG-1 antibody was raised against a 14 amino acid peptide from near the amino terminus of human BAG-1.
Formulation:	PBS containing 0.02% sodium azide.
Concentration:	1ug/ul
Purification:	Affinity chromatography purified via peptide column
Conjugation:	Unconjugated
Storage:	Store at -20°C as received.
Stability:	Stable for 12 months from date of receipt.
Gene Name:	BCL2 associated athanogene 1
Database Link:	NP_004314 Entrez Gene 573 Human Q99933
Background:	Bcl-2-associated athanogene 1 (BAG-1) was first identified as an anti-apoptotic bcl-2-binding protein. Later it was found to bind the molecular chaperones Hsp70 and Hsc70 through its carboxy-terminal sequence (termed the Bag domain), resulting in the inhibition of the refolding activity of these chaperones. It is thought that by binding and inhibiting these molecular chaperones, BAG-1 is able to modulate the expression level of proteins requiring chaperones to fold correctly. One such group of proteins that are affected is glucocorticoid receptors. Other reports have suggested that the level of BAG-1 expression correlates with the aggressiveness of various cancers. Multiple isoforms of BAG-1 are known to exist.
Synonyms:	HAP; RAP46

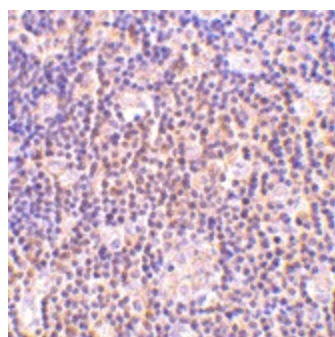


[View online »](#)

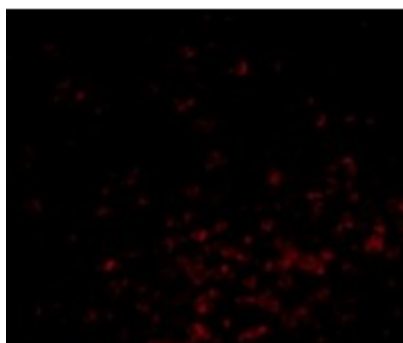
Product images:



Western blot analysis of BAG-1 in PC-3 cell lysate with BAG-1 antibody at (A) 1 and (B) 2 ug/ml.



Immunohistochemistry of BAG-1 in human lymph node tissue with BAG-1 antibody at 2 ug/ml.



Immunofluorescence of BAG-1 in Human Lymph Node cells with BAG-1 antibody at 20 ug/mL.