

Product datasheet for **TA306328**

RP105 (CD180) Rabbit Polyclonal Antibody

Product data:

Product Type:	Primary Antibodies
Applications:	IF, IHC, WB
Recommended Dilution:	WB: 0.5 - 1 ug/mL, ICC: 2 ug/mL, IF: 10 ug/mL
Reactivity:	Human, Mouse
Host:	Rabbit
Isotype:	IgG
Clonality:	Polyclonal
Immunogen:	RP105 antibody was raised against a 14 amino acid peptide from near the center of human RP105 .
Formulation:	PBS containing 0.02% sodium azide.
Concentration:	1 mg/ml
Purification:	Affinity chromatography purified via peptide column
Conjugation:	Unconjugated
Storage:	Store at -20°C as received.
Stability:	Stable for 12 months from date of receipt.
Gene Name:	CD180 molecule
Database Link:	BAA12019 Entrez Gene 4064 Human Q99467

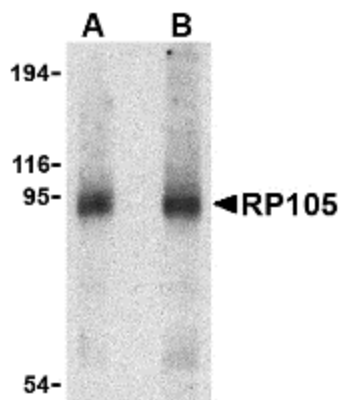
Background: Toll-like receptors (TLRs) are evolutionarily conserved pattern-recognition molecules resembling the toll proteins that mediate antimicrobial responses in *Drosophila*. These proteins recognize different microbial products during infection and serve as an important link between the innate and adaptive immune responses. The signaling of these TLRs is kept under tight control by the expression of endogenous inhibiting proteins. One such protein is RP105, a recently identified homolog to TLR4 that, with MD-1, interacts with and inhibits the TLR4/MD-2 signaling pathway. It has also been suggested that the RP105/MD-1 complex influences antibody production mediated by both TLR4/MD-2 and TLR2 receptor complexes. Despite its predicted molecular weight, RP105 often migrates at 95 – 105 kDa.



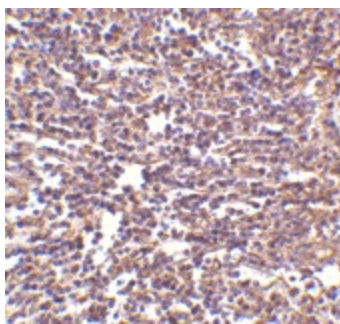
[View online »](#)

Synonyms: LY64; Ly78; RP105

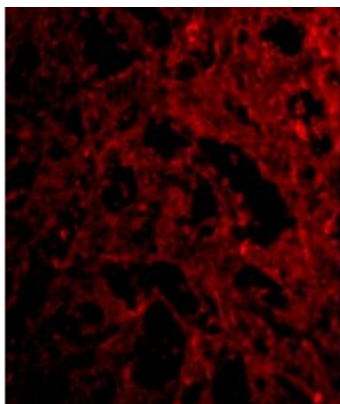
Product images:



Western blot analysis of RP105 in human spleen tissue lysate with RP105 antibody at (A) 0.5 and (B) 1 ug/ml.



Immunohistochemistry of RP105 in human spleen tissue with RP105 antibody at 2 ug/ml.



Immunofluorescence of RP105 in human spleen tissue with RP105 antibody at 10 ug/mL.