

Product datasheet for **TA306324**

Bif (SH3GLB1) Rabbit Polyclonal Antibody

Product data:

Product Type:	Primary Antibodies
Applications:	IF, WB
Recommended Dilution:	WB: 1 - 2 ug/mL, ICC: 10 ug/mL
Reactivity:	Human, Mouse
Host:	Rabbit
Isotype:	IgG
Clonality:	Polyclonal
Immunogen:	BIF antibody was raised against a 15 amino acid peptide from near the carboxy terminus of human BIF.
Formulation:	PBS containing 0.02% sodium azide.
Concentration:	1ug/ul
Purification:	Affinity chromatography purified via peptide column
Conjugation:	Unconjugated
Storage:	Store at -20°C as received.
Stability:	Stable for 12 months from date of receipt.
Gene Name:	SH3 domain containing GRB2 like endophilin B1
Database Link:	AAK27365 Entrez Gene 51100 Human Q9Y371



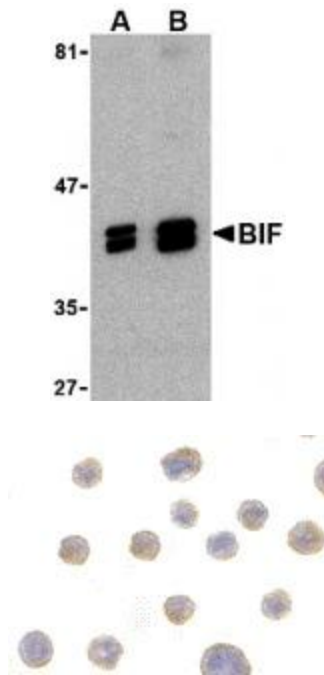
[View online »](#)

Background:

Apoptosis plays a major role in normal organism development, tissue homeostasis, and removal of damaged cells and is caused by the activation of proteolytic enzymes termed caspases. Proteins that comprise the Bcl-2 family such as Bax appear to control the activation of these enzymes. Bax activity was found to be regulated by its association with Bax-interacting factor 1 (BIF), a member of the endophilin B family that is associated with intracellular membranes. Following this interaction, Bax undergoes a conformational change and translocates to mitochondrial membranes. The Bax/BIF interaction appears to be enhanced by apoptotic stimuli, suggesting that BIF acts as the trigger to activate Bax, and as suppression of BIF promoted HeLa cell colony formation in soft agar, it may have a role in the suppression of cancer progression. At least two isoforms of BIF are known to exist.

Synonyms:

Bif-1; CGI-61; dj612B15.2; PPP1R70

Product images:

Western blot analysis of BIF in HeLa cell lysate with BIF antibody at (A) 1 and (B) 2 ug/mL.

Immunocytochemistry of BIF in HeLa with BIF antibody at 10 ug/mL.