

Product datasheet for **TA306323**

TIM 4 (TIMD4) Rabbit Polyclonal Antibody

Product data:

Product Type:	Primary Antibodies
Applications:	IF, IHC, WB
Recommended Dilution:	WB: 1 - 2 ug/mL, ICC: 10 ug/mL, IF: 20 ug/mL
Reactivity:	Human, Mouse
Host:	Rabbit
Isotype:	IgG
Clonality:	Polyclonal
Immunogen:	TIM-4 antibody was raised against a 16 amino acid synthetic peptide from near the center of human TIM-4. The immunogen is located within amino acids 60 - 110 of TIM-4.
Formulation:	PBS containing 0.02% sodium azide.
Concentration:	1ug/ul
Purification:	Affinity chromatography purified via peptide column
Conjugation:	Unconjugated
Storage:	Store at -20°C as received.
Stability:	Stable for 12 months from date of receipt.
Gene Name:	T-cell immunoglobulin and mucin domain containing 4
Database Link:	NP_612388 Entrez Gene 91937 Human Q96H15

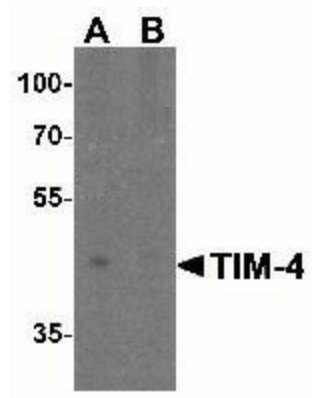
Background: The T cell immunoglobulin and mucin domain containing protein (TIM) family encodes cell surface receptors that are involved in the regulation of T helper (Th) -1 and -2 cell-mediated immunity. TIM-4, which is preferentially expressed on macrophages and dendritic cells, is the natural ligand of TIM-1, and this binding leads to T-cell expansion and cytokine production. Unlike other members of the TIM family, TIM-4 lacks a putative tyrosine phosphorylation signal sequence in its intracellular domain. The TIM-4 gene maps to a locus associated with predisposition to asthma in both mice and humans and with its connection to TIM-1-triggered Th2 responsiveness, may be considered as a candidate disease/predisposition gene for asthma.



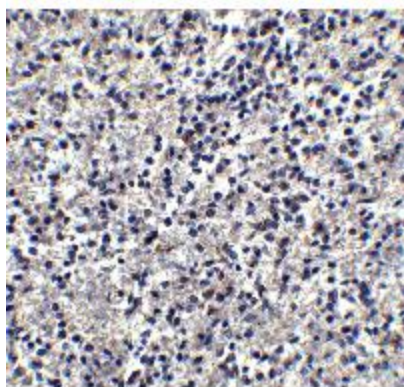
[View online »](#)

Synonyms: SMUCKLER; TIM4

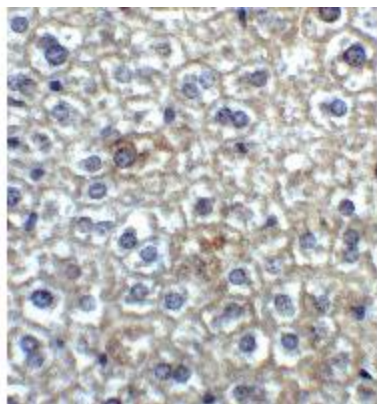
Product images:



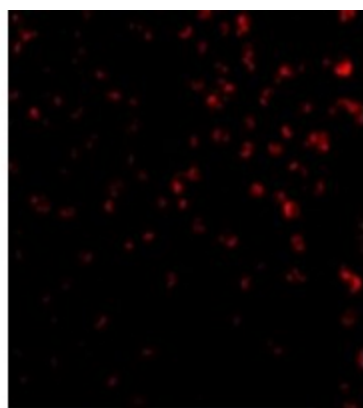
Western blot analysis of TIM-4 in RAW264.7 cell lysate with TIM-4 antibody at 2ug/ml in (A) the absence and (B) the presence of blocking peptide.



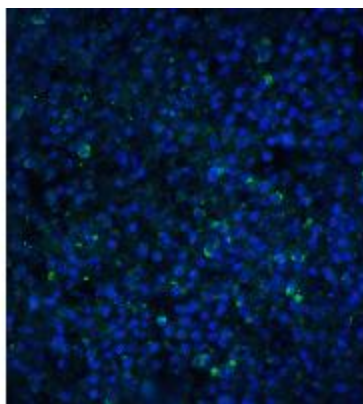
Immunohistochemistry of TIM-4 in human spleen tissue with TIM-4 antibody at 2.5ug/ml.



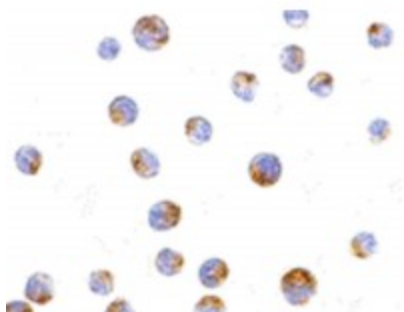
Immunohistochemistry of TIM-4 in mouse liver tissue with TIM-4 antibody at 2ug/ml.



Immunofluorescence of TIM-4 in Jurkat cells with TIM-4 antibody at 20ug/ml.



Immunofluorescence of TIM-4 in human spleen tissue with TIM-4 antibody at 20ug/ml.



Immunocytochemistry of TIM-4 in Jurkat cells with TIM-4 antibody at 10ug/ml.