

## Product datasheet for **TA306320**

### **TIM 1 (HAVCR1) Rabbit Polyclonal Antibody**

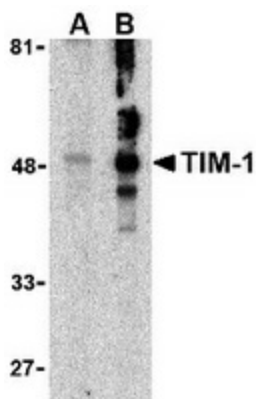
#### **Product data:**

<b>Product Type:</b>	Primary Antibodies
<b>Applications:</b>	IF, IHC, WB
<b>Recommended Dilution:</b>	WB: 1 - 2 ug/mL, ICC: 10 ug/mL, IF: 20 ug/mL
<b>Reactivity:</b>	Human, Mouse
<b>Host:</b>	Rabbit
<b>Isotype:</b>	IgG
<b>Clonality:</b>	Polyclonal
<b>Immunogen:</b>	TIM-1 antibody was raised against a 16 amino acid peptide from near the amino terminus of human TIM-1.
<b>Formulation:</b>	PBS containing 0.02% sodium azide.
<b>Purification:</b>	Affinity chromatography purified via peptide column
<b>Conjugation:</b>	Unconjugated
<b>Storage:</b>	Antibody can be stored at 4°C up to one year. Antibodies should not be exposed to prolonged high temperatures.
<b>Stability:</b>	Stable for 12 months from date of receipt.
<b>Gene Name:</b>	hepatitis A virus cellular receptor 1
<b>Database Link:</b>	<a href="#">NP_036338</a> <a href="#">Entrez Gene 26762 Human</a> <a href="#">Q96D42</a>
<b>Background:</b>	The human form of TIM-1 was initially discovered as a membrane glycoprotein through which the hepatitis A virus can gain entry into a cell. It was also identified as kidney injury molecule 1 (Kim-1), a predicted adhesion molecule that is upregulated on the surfaces of kidney epithelia. It is also expressed on T helper 2 (Th2) cells of the immune system, and following the binding of its natural ligand TIM-4, stimulates T cell expansion and cytokine production in response to viral challenge. It has been suggested that hyperactivation of TIM-1 leads to an increased level of Th2 responsiveness and asthma susceptibility, and antibodies to TIM-1 may therefore be a novel approach to treating asthma.
<b>Synonyms:</b>	HAVCR; HAVCR-1; KIM-1; KIM1; TIM; TIM-1; TIM1; TIMD-1; TIMD1

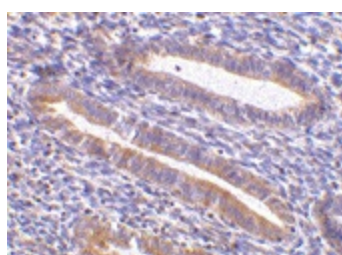


[View online »](#)

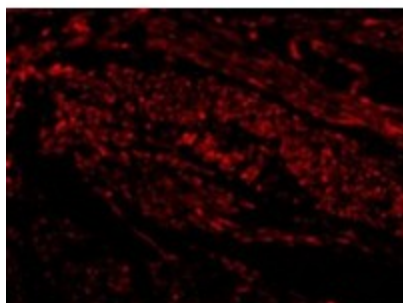
## Product images:



Western blot analysis of TIM-1 in human uterus tissue lysate with TIM-1 antibody at (A) 1 and (B) 2 ug/ml.



Immunohistochemistry of TIM-1 in human uterus tissue with TIM-1 antibody at 10 ug/ml.



Immunofluorescence of TIM-1 in Human Uterus cells with TIM-1 antibody at 20 ug/mL.