

Product datasheet for **TA306316**

IL27 Rabbit Polyclonal Antibody

Product data:

Product Type:	Primary Antibodies
Applications:	IF, WB
Recommended Dilution:	WB: 2 - 4 ug/mL, ICC: 10 ug/mL
Reactivity:	Human, Mouse
Host:	Rabbit
Isotype:	IgG
Clonality:	Polyclonal
Immunogen:	IL-27 antibody was raised against a 16 amino acid peptide from near the amino terminus of human IL-27.
Formulation:	PBS containing 0.02% sodium azide.
Concentration:	1ug/ul
Purification:	Affinity chromatography purified via peptide column
Conjugation:	Unconjugated
Storage:	Store at -20°C as received.
Stability:	Stable for 12 months from date of receipt.
Gene Name:	interleukin 27
Database Link:	NP_663634 Entrez Gene 246779 Mouse Entrez Gene 246778 Human Q8NEV9

Background: Like interleukin-23 (IL-23), IL-27 is a recently discovered member of the IL-6/IL-12 family of proinflammatory and immunoregulatory cytokines. It exists as a heterodimer composed of the p40-related protein EB13 and an IL-12 p35-related protein termed p28. IL-27 is produced after activation by antigen-presenting cells and induces proliferation of naïve but not memory CD4+ T-cells. It acts by binding to its receptor WSX-1 and gp130 which results in the activation of a Jak/STAT signaling cascade, suggesting the IL-27 is involved in the regulation of immune processes. It has been suggested that IL-27 can also be used as a therapeutic agent against cancer as it can also induce tumor-specific anti-tumor activity mediated through CD8+ T-cells, IFN-gamma, and T-bet.

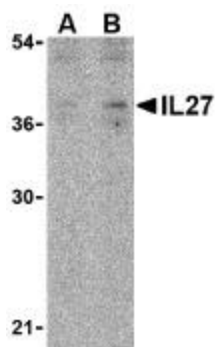


[View online »](#)

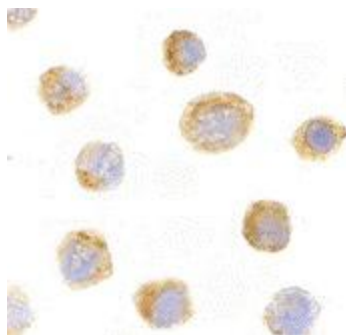
Synonyms: IL-27; IL-27A; IL27A; IL27p28; IL30; p28

Protein Families: Druggable Genome, Transmembrane

Product images:



Western blot analysis of IL-27 in EL4 lysate with IL-27 antibody at (A) 2 and (B) 4 ug/mL.



Immunocytochemistry of IL-27 in EL4 with IL-27 antibody at 10 ug/mL.