

Product datasheet for **TA306315**

IL23 (IL23A) Rabbit Polyclonal Antibody

Product data:

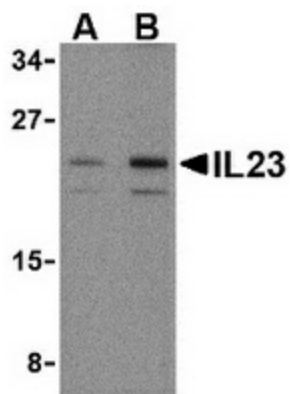
Product Type:	Primary Antibodies
Applications:	IF, IHC, WB
Recommended Dilution:	WB: 1 - 2 ug/mL, ICC: 2 ug/mL, IF: 20 ug/mL
Reactivity:	Human, Mouse
Host:	Rabbit
Isotype:	IgG
Clonality:	Polyclonal
Immunogen:	IL-23 antibody was raised against a 16 amino acid peptide from near the amino terminus of human IL-23.
Formulation:	PBS containing 0.02% sodium azide.
Concentration:	1ug/ul
Purification:	Affinity chromatography purified via peptide column
Conjugation:	Unconjugated
Storage:	Antibody can be stored at 4°C up to one year. Antibodies should not be exposed to prolonged high temperatures.
Stability:	Stable for 12 months from date of receipt.
Gene Name:	interleukin 23 subunit alpha
Database Link:	AAH66268 Entrez Gene 51561 Human Q9NPF7
Background:	Like interleukin-27 (IL-27), IL-23 is a recently discovered member of the IL-6/IL-12 family of proinflammatory and immunoregulatory cytokines. It exists as a heterodimer composed of the IL-12p40 subunit and a novel p19 subunit. IL-23 is secreted by activated dendritic cells, macrophages, and monocytes (3,4). Its biological activities include enhancing the proliferation of memory T cells and the production of IFN-gamma, IL-12, and TNF-alpha from activated T cells, and can stimulate macrophages to produce TNF-alpha and nitric oxide. It has also been shown to possess potent anti-tumor and anti-metastatic activity in mouse models of cancer, suggesting a potential role for IL-23 in therapeutic treatment of cancer.



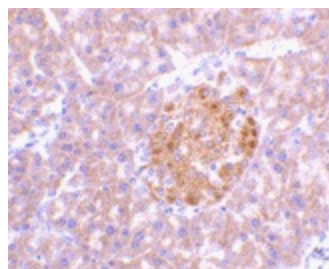
[View online »](#)

Synonyms: IL-23; IL-23A; IL23P19; P19; SGRF

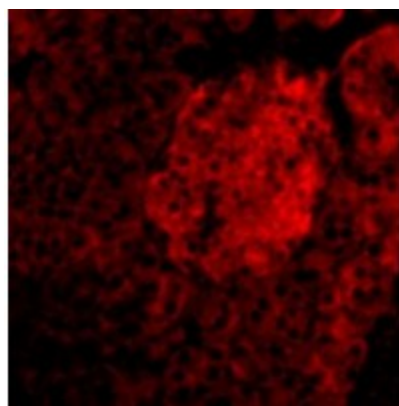
Product images:



Western blot analysis of IL-23 in mouse pancreas tissue lysate with IL-23 antibody at (A) 1 and (B) 2 ug/ml.



Immunohistochemistry of IL-23 in mouse pancreas tissue with IL-23 antibody at 2 ug/ml.



Immunofluorescence of IL-23 in Mouse Pancreas tissue with IL-23 antibody at 20 ug/mL.