

Product datasheet for **TA306314**

IL23 (IL23A) Rabbit Polyclonal Antibody

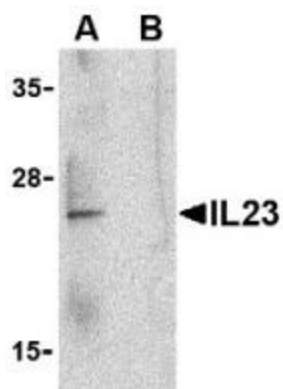
Product data:

Product Type:	Primary Antibodies
Applications:	IF, WB
Recommended Dilution:	WB: 1 ug/mL, ICC: 10 ug/mL, IF: 20 ug/mL
Reactivity:	Human, Mouse
Host:	Rabbit
Isotype:	IgG
Clonality:	Polyclonal
Immunogen:	IL-23 antibody was raised against a 16 amino acid peptide from near the carboxy terminus of human IL-23.
Formulation:	PBS containing 0.02% sodium azide.
Concentration:	1ug/ul
Purification:	Affinity chromatography purified via peptide column
Conjugation:	Unconjugated
Storage:	Store at -20°C as received.
Stability:	Stable for 12 months from date of receipt.
Gene Name:	interleukin 23 subunit alpha
Database Link:	AAH66268 Entrez Gene 51561 Human Q9NPF7
Background:	Like interleukin-27 (IL-27), IL-23 is a recently discovered member of the IL-6/IL-12 family of proinflammatory and immunoregulatory cytokines. It exists as a heterodimer composed of the IL-12p40 subunit and a novel p19 subunit. IL-23 is secreted by activated dendritic cells, macrophages, and monocytes. Its biological activities include enhancing the proliferation of memory T cells and the production of IFN-gamma, IL-12, and TNF-alpha from activated T cells, and can stimulate macrophages to produce TNF-alpha and nitric oxide. It has also been shown to possess potent anti-tumor and anti-metastatic activity in mouse models of cancer, suggesting a potential role for IL-23 in therapeutic treatment of cancer.
Synonyms:	IL-23; IL-23A; IL23P19; P19; SGRF

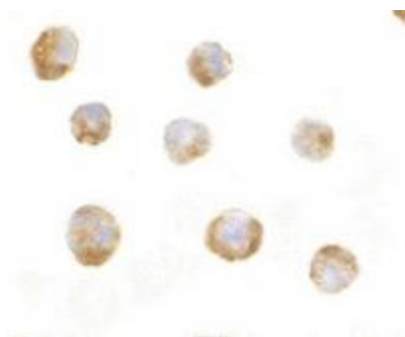


[View online »](#)

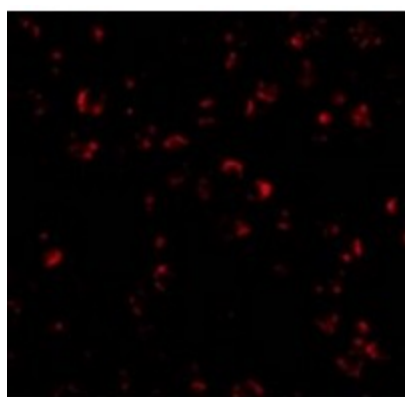
Product images:



Western blot analysis of IL-23 in Raji lysate with IL-23 antibody at 1 ug/mL in the (A) absence and (B) presence of blocking peptide.



Immunocytochemistry of IL-23 in Raji cells with IL-23 antibody at 10 ug/mL.



Immunofluorescence of IL-23 in Raji cells with IL-23 antibody at 20 ug/mL.