

Product datasheet for **TA306301**

KDM1A Rabbit Polyclonal Antibody

Product data:

Product Type:	Primary Antibodies
Applications:	WB
Recommended Dilution:	WB: 1 - 2 ug/mL
Reactivity:	Human, Mouse, Rat
Host:	Rabbit
Isotype:	IgG
Clonality:	Polyclonal
Immunogen:	LSD1 antibody was raised against a 17 amino acid peptide from near the amino terminus of human LSD1.
Formulation:	PBS containing 0.02% sodium azide.
Concentration:	1ug/ul
Purification:	Affinity chromatography purified via peptide column
Conjugation:	Unconjugated
Storage:	Store at -20°C as received.
Stability:	Stable for 12 months from date of receipt.
Gene Name:	lysine demethylase 1A
Database Link:	NP_001009999 Entrez Gene 99982 Mouse Entrez Gene 500569 Rat Entrez Gene 23028 Human O60341



[View online »](#)

Background:

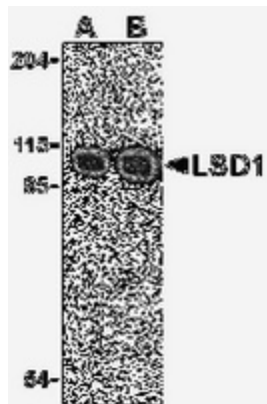
Histone modifications mediate changes in gene expression by altering chromatin structure or by serving as a platform to recruit other proteins. LSD1 is a recently discovered amine oxidase that catalyzes the lysine-specific demethylation of histone proteins via an FAD-dependent oxidative reaction (1). Methylation on histone H3-K9 is thought to play an important role in heterochromatin formation, while methylation on arginine and some lysine residues (such as H3-K4) is associated with active transcription (2). LSD1 associates with various proteins, including HDAC1/2, CoREST, and BHC80, that act to regulate LSD1 activity in vivo, and in a histone H3-K4-specific methylase complex that is involved in transcriptional regulation (3,4). Experiments have shown that CoREST, a SANT domain-containing corepressor (5) acts to enhance LSD1 activity, while BHC80, a PHD domain-containing protein (6), inhibits CoREST/LSD1 activity in vitro (3). LSD1-mediated histone demethylation thus may have significant effects on gene expression.

Synonyms:

AOF2; BHC110; CPRF; KDM1; LSD1

Protein Families:

Druggable Genome, Transcription Factors

Product images:

Western blot analysis of LSD1 in P815 cell lysate with LSD1 antibody at (A) 1 and (B) 2 ug/ml.