

Product datasheet for **TA306299**

DDX3 (DDX3X) Rabbit Polyclonal Antibody

Product data:

Product Type:	Primary Antibodies
Applications:	IF, WB
Recommended Dilution:	WB: 0.5 - 1 ug/mL, ICC: 10 ug/mL, IF: 20 ug/mL
Reactivity:	Human, Mouse
Host:	Rabbit
Isotype:	IgG
Clonality:	Polyclonal
Immunogen:	DDX3 antibody was raised against a 16 amino acid peptide from near the amino terminus of human DDX3.
Formulation:	PBS containing 0.02% sodium azide.
Concentration:	1ug/ul
Purification:	Affinity chromatography purified via peptide column
Conjugation:	Unconjugated
Storage:	Store at -20°C as received.
Stability:	Stable for 12 months from date of receipt.
Gene Name:	DEAD-box helicase 3, X-linked
Database Link:	AAC34298 Entrez Gene 1654 Human O00571

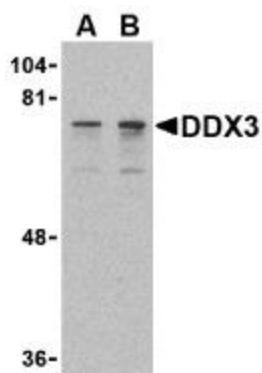
Background: DDX3 contains all of the motifs of the DEAD-box family of RNA helicases, including the Asp-Glu-Ala-Asp sequence that gives the protein family its name and distinguishes it from other RNA helicases (1,2). DDX3 is localized to the X chromosome and has a highly conserved functional homolog (DBY) on the Y chromosome (3). DDX3 is thought to be involved in RNA splicing, RNA transport, and translation initiation (4). It has also been shown to be involved in cell growth control and is deregulated in hepatitis virus-associated hepatocellular carcinoma (5). Recent experiments suppressing DDX3 expression blocked HIV-1 RNA export from the nucleus, suggesting that DDX3 functions as a shuttling protein that transports the HIV-1 protein Rev and its cofactor CRM1 from the nucleus to the cytoplasm (6).



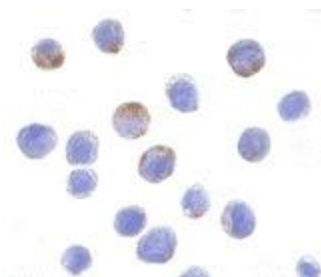
[View online »](#)

Synonyms: CAP-Rf; DBX; DDX3; DDX14; HLP2

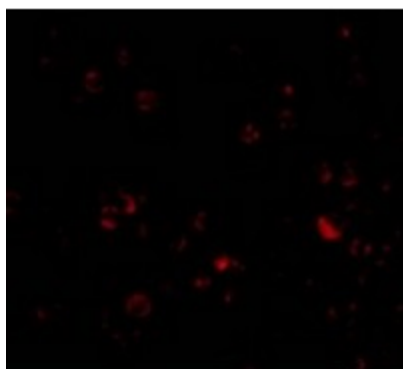
Product images:



Western blot analysis of DDX3 in HepG2 cell lysate with DDX3 antibody at (A) 0.5 and (B) 1 ug/mL.



Immunocytochemistry of DDX3 in HepG2 cells with DDX3 antibody at 10 ug/mL.



Immunofluorescence of DDX3 in HepG2 cells with DDX3 antibody at 20 ug/mL.