

## Product datasheet for **TA306296**

### IL32 Rabbit Polyclonal Antibody

#### Product data:

Product Type:	Primary Antibodies
Applications:	IF, IHC, WB
Recommended Dilution:	WB: 5 - 10 ug/mL, ICC: 10 ug/mL, IF: 20 ug/mL
Reactivity:	Human, Mouse
Host:	Rabbit
Isotype:	IgG
Clonality:	Polyclonal
Immunogen:	IL-32 antibody was raised against a 15 amino acid synthetic peptide from near the carboxy terminus of human IL-32. The immunogen is located within the last 50 amino acids of IL-32.
Formulation:	PBS containing 0.02% sodium azide.
Concentration:	1ug/ul
Purification:	Affinity chromatography purified via peptide column
Conjugation:	Unconjugated
Storage:	Store at -20°C as received.
Stability:	Stable for 12 months from date of receipt.
Gene Name:	interleukin 32
Database Link:	<a href="#">AAH09401</a> <a href="#">Entrez Gene 9235 Human</a> <a href="#">P24001</a>



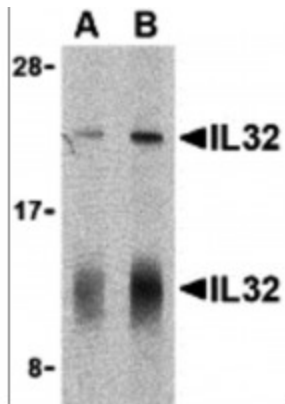
[View online »](#)

**Background:**

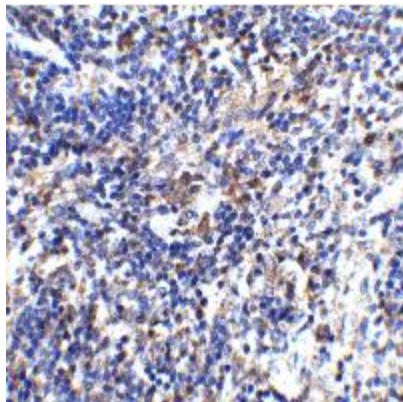
Interleukin-32 (IL-32) was initially identified as a transcript (NK4) that is selectively expressed in lymphocytes and NK cells and whose expression is increased following activation by IL-2. It was later re-isolated from an IL-18-treated lung carcinoma cell line and re-named IL-32 (2). IL-32 is unusual in that it does not share sequence homology with known cytokine families and is highly expressed in immune tissues, existing in at least four differentially spliced isoforms. Because treatment of human monocytic and mouse macrophage cells with IL-32 induces several proinflammatory cytokines such as TNF-alpha, IL-8 and MIP-2, and because it is also induced in human peripheral lymphocyte cells after mitogen stimulation and in epithelial cells by IFNgamma, it has been suggested that IL-32 may play a role in autoimmune and inflammatory diseases such as rheumatoid arthritis (3).

**Synonyms:**

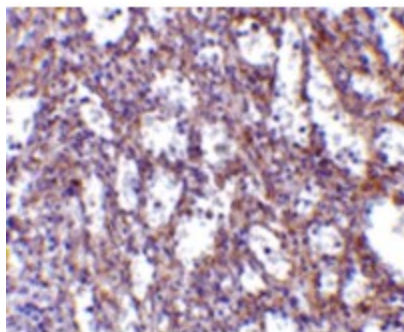
IL-32alpha; IL-32beta; IL-32delta; IL-32gamma; NK4; TAIF; TAIFa; TAIFb; TAIFc; TAIFd

**Product images:**

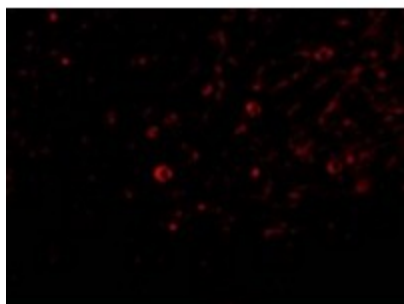
Western blot analysis of IL-32 in human spleen lysate with IL-32 antibody at (A) 5 and (B) 10ug/ml shows two isoforms of IL-32.



Immunohistochemistry of IL-32 in mouse spleen tissue with IL 32 antibody at 2ug/ml.



Immunohistochemistry of IL-32 in human spleen tissue with IL-32 antibody at 10ug/ml.



Immunofluorescence of IL-32 in Human Spleen cells with IL-32 antibody at 20ug/ml.