

## Product datasheet for **TA306294**

### IL31 Rabbit Polyclonal Antibody

#### Product data:

Product Type:	Primary Antibodies
Applications:	IHC, WB
Recommended Dilution:	WB: 2.5 - 10 ug/mL, ICC: 10 ug/mL
Reactivity:	Mouse
Host:	Rabbit
Isotype:	IgG
Clonality:	Polyclonal
Immunogen:	IL-31 antibody was raised against a 16 amino acid peptide from near the amino terminus of mouse IL-31.
Formulation:	PBS containing 0.02% sodium azide.
Concentration:	1ug/ul
Purification:	Affinity chromatography purified via peptide column
Conjugation:	Unconjugated
Storage:	Store at -20°C as received.
Stability:	Stable for 12 months from date of receipt.
Gene Name:	interleukin 31
Database Link:	<a href="#">AAS82846</a> <a href="#">Entrez Gene 76399 Mouse</a> <a href="#">Q6EAL8</a>



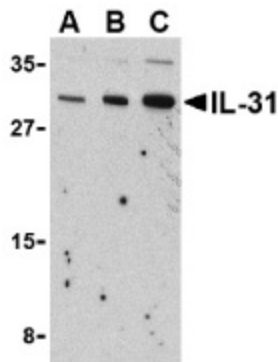
[View online »](#)

**Background:**

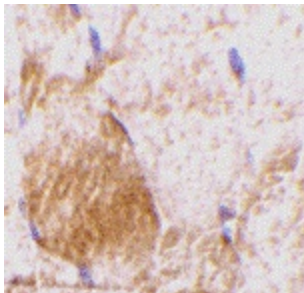
Interleukin-31 (IL-31) is a recently discovered T-cell cytokine closely related to IL-6 type cytokines and is preferentially produced by T helper type 2 cells (1,2). IL-31 activity is mediated through the ligand-induced oligomerization of a dimeric receptor complex containing IL-31 receptor A and oncostatin M receptor (2). In response to IL-31 binding, these proteins activate the JAK/STAT and the AKT signaling pathways (3). RNA levels of IL-31 receptor A and oncostatin M receptor are induced in activated monocytes but are expressed constitutively in epithelial cells. IL-31, when overexpressed in transgenic mice, results in the development of pruritis, alopecia, and skin lesions and in humans may result in atopic dermatitis, suggesting that IL-31 may represent a novel target for antipruritic drug development (1,4).

**Synonyms:**

IL-31

**Product images:**

Western blot analysis of IL-31 in RAW264.7 cell lysate with IL-31 antibody at (A) 2.5, (B) 5 and (C) 10 ug/ml.



Immunohistochemistry of IL-31 in rat skeletal muscle tissue with IL-31 antibody at 10 ug/ml.