

Product datasheet for **TA306290**

TLR9 Rabbit Polyclonal Antibody

Product data:

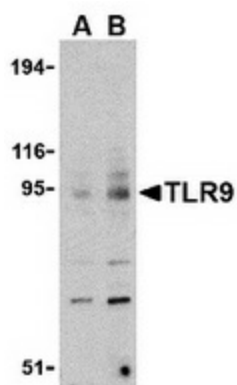
Product Type:	Primary Antibodies
Applications:	IF, IHC, WB
Recommended Dilution:	WB: 0.5 - 1 ug/mL, ICC: 2 ug/mL, IF: 10 ug/mL
Reactivity:	Human, Mouse
Host:	Rabbit
Isotype:	IgG
Clonality:	Polyclonal
Immunogen:	TLR9 antibody was raised against a peptide corresponding to 16 amino acids near the carboxy terminus of human TLR9.
Formulation:	PBS containing 0.02% sodium azide.
Concentration:	1 mg/ml
Purification:	Affinity chromatography purified via peptide column
Conjugation:	Unconjugated
Storage:	Store at -20°C as received.
Stability:	Stable for 12 months from date of receipt.
Gene Name:	toll like receptor 9
Database Link:	AAH32713 Entrez Gene 54106 Human Q9NR96
Background:	Toll-like receptors (TLRs) are evolutionarily conserved pattern-recognition molecules resembling the toll proteins that mediate antimicrobial responses in <i>Drosophila</i> . These proteins recognize different microbial products during infection and serve as an important link between the innate and adaptive immune responses (1,2). TLR9 forms a subfamily along with TLR7 and TLR8 that recognize viral RNA and CpG DNA sequences (3) and are localized in intracellular acidic compartments such as the phagolysosome (4). Unlike other TLRs which act through adaptor molecules such as TOLLIP, TIRAP, TRIF, and MyD88 to activate various kinases and transcription factors to respond to potential infection (5), TLR9 is strictly dependent on MyD88 (3).



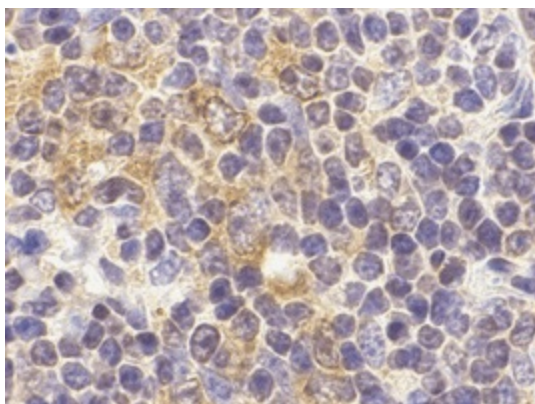
[View online »](#)

Synonyms: CD289

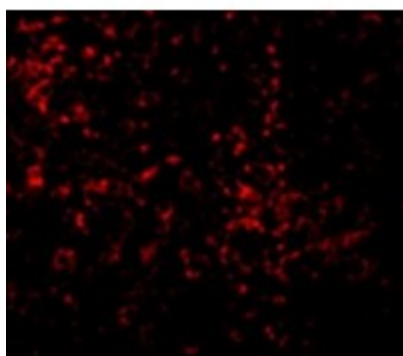
Product images:



Western blot analysis of TLR9 in mouse spleen cell lysate with TLR9 antibody at (A) 0.5, (B) 1 and (C) 2 ug/ml.



Immunohistochemistry of TLR9 in mouse spleen cells with TLR9 antibody at 2 ug/ml.



Immunofluorescence of TLR9 in mouse spleen cells with TLR9 antibody at 10 ug/mL.