

Product datasheet for **TA306287**

ATF6 Rabbit Polyclonal Antibody

Product data:

Product Type:	Primary Antibodies
Applications:	IF, WB
Recommended Dilution:	WB: 0.5 - 1 ug/mL, ICC: 10 ug/mL
Reactivity:	Human, Mouse
Host:	Rabbit
Isotype:	IgG
Clonality:	Polyclonal
Immunogen:	ATF6 antibody was raised against a 17 amino acid synthetic peptide from near the amino terminus of human ATF6. The immunogen is located within amino acids 30 - 80 of ATF6.
Formulation:	PBS containing 0.02% sodium azide.
Concentration:	1 mg/ml
Purification:	Affinity chromatography purified via peptide column
Conjugation:	Unconjugated
Storage:	Store at -20°C as received.
Stability:	Stable for 12 months from date of receipt.
Gene Name:	activating transcription factor 6
Database Link:	NP_031374 Entrez Gene 226641 Mouse Entrez Gene 22926 Human P18850



[View online »](#)

Background:

Disruptions of protein folding and maturation in the endoplasmic reticulum (ER) result in the activation of the unfolded protein response (UPR), an integrated cellular signaling pathway that transmits information from the ER lumen to the cytoplasm and nucleus. Activating transcription factor 6 (ATF6) as well as the ER-transmembrane protein kinases IRE1p and PERK are the major transducers of the UPR. ATF6 is an ER transmembrane protein that is normally bound to the ER chaperone GRP78, but upon ER stress is released from GRP78 and proteolytically cleaved to yield a cytosolic fragment which then migrates to the nucleus, and together with the transcription factor XBP-1, activates transcription of UPR-responsive genes (2-4). ATF6 has two isoforms (ATF6alpha and ATF6beta); only ATF6alpha is recognized by this antibody.

Synonyms:

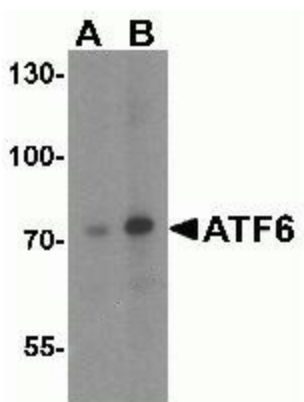
ACHM7; ATF6A

Protein Families:

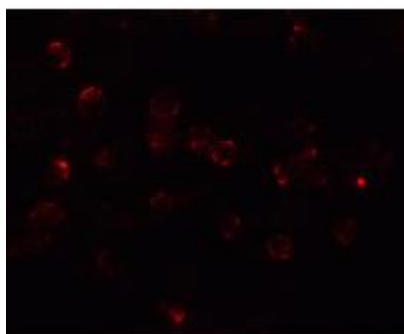
Transcription Factors

Protein Pathways:

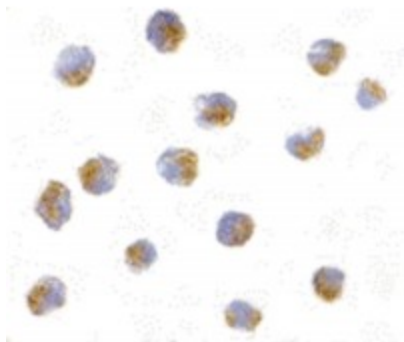
Alzheimer's disease

Product images:

Western blot analysis of ATF6 in MCF7 cell lysate with ATF6 antibody at (A) 1 and (B) 2 ug/mL.



Immunofluorescence of ATF6 in MCF7 cells with ATF6 Antibody at 20 ug/mL.



Immunocytochemistry of ATF6 in A20 with ATF6 antibody at 10 ug/mL.