

Product datasheet for **TA306285**

ASK1 (MAP3K5) Rabbit Polyclonal Antibody

Product data:

Product Type:	Primary Antibodies
Applications:	WB
Recommended Dilution:	WB: 1 - 2 ug/mL
Reactivity:	Human, Mouse
Host:	Rabbit
Isotype:	IgG
Clonality:	Polyclonal
Immunogen:	ASK1 antibody was raised against a 16 amino acid peptide from near the amino terminus of human ASK1.
Formulation:	PBS containing 0.02% sodium azide.
Concentration:	1ug/ul
Purification:	Affinity chromatography purified via peptide column
Conjugation:	Unconjugated
Storage:	Store at -20°C as received.
Stability:	Stable for 12 months from date of receipt.
Gene Name:	mitogen-activated protein kinase kinase kinase 5
Database Link:	NP_005914 Entrez Gene 26408 Mouse Entrez Gene 4217 Human Q99683

Background: Mitogen-activated protein (MAP) kinase cascades are activated in response to various extracellular stimuli, including cytokines, growth factors and environmental stresses. A novel MAP kinase kinase kinase (MAPKKK) was recently identified and designated ASK1 (for apoptosis signal-regulating kinase 1) and MAPKKK5 (1-3). ASK1 activated two different subgroups of MAPKK, MKK4 and MKK6, which in turn activated c-Jun N-terminal kinase (JNK) and p38 MAP kinase, respectively. ASK1/MAPKKK5 is activated by TNFR and Fas through the interaction with members of the TRAF family and Fas-associated protein Daxx. Overexpression of ASK1 induced apoptotic cell death, and a catalytically inactive form of ASK1 inhibited TNF-A-induced apoptosis. ASK1 is expressed in variety of tissues and cell lines.



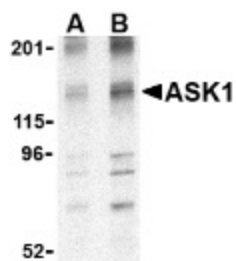
[View online »](#)

Synonyms: ASK1; MAPKKK5; MEKK5

Protein Families: Druggable Genome, Protein Kinase

Protein Pathways: Amyotrophic lateral sclerosis (ALS), MAPK signaling pathway, Neurotrophin signaling pathway

Product images:



Western blot analysis of ASK1 in 3T3 cell lysate with ASK1 antibody at (A) 1 and (B) 2 ug/ml.