

## Product datasheet for **TA306284**

### ASK1 (MAP3K5) Rabbit Polyclonal Antibody

#### Product data:

Product Type:	Primary Antibodies
Applications:	IF, WB
Recommended Dilution:	WB: 0.5 - 2 ug/mL, ICC: 2 ug/mL, IF: 20 ug/mL
Reactivity:	Human, Mouse
Host:	Rabbit
Isotype:	IgG
Clonality:	Polyclonal
Immunogen:	ASK1 antibody was raised against a 16 amino acid peptide from near the carboxy terminus of human ASK1.
Formulation:	PBS containing 0.02% sodium azide.
Concentration:	1ug/ul
Purification:	Affinity chromatography purified via peptide column
Conjugation:	Unconjugated
Storage:	Store at -20°C as received.
Stability:	Stable for 12 months from date of receipt.
Gene Name:	mitogen-activated protein kinase kinase kinase 5
Database Link:	<a href="#">NP_005914</a> <a href="#">Entrez Gene 26408 Mouse</a> <a href="#">Entrez Gene 4217 Human</a> <a href="#">Q99683</a>

**Background:** Mitogen-activated protein (MAP) kinase cascades are activated in response to various extracellular stimuli, including cytokines, growth factors and environmental stresses. A novel MAP kinase kinase kinase (MAPKKK) was recently identified and designated ASK1 (for apoptosis signal-regulating kinase 1) and MAPKKK5 (1-3). ASK1 activated two different subgroups of MAPKK, MKK4 and MKK6, which in turn activated c-Jun N-terminal kinase (JNK) and p38 MAP kinase, respectively. ASK1/MAPKKK5 is activated by TNFR and Fas through the interaction with members of the TRAF family and Fas-associated protein Daxx. Overexpression of ASK1 induced apoptotic cell death, and a catalytically inactive form of ASK1 inhibited TNF-A-induced apoptosis. ASK1 is expressed in variety of tissues and cell lines.



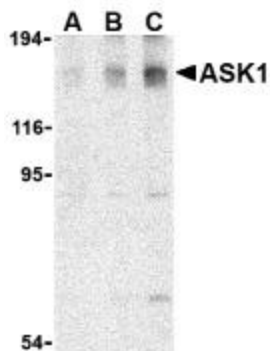
[View online »](#)

**Synonyms:** ASK1; MAPKKK5; MEKK5

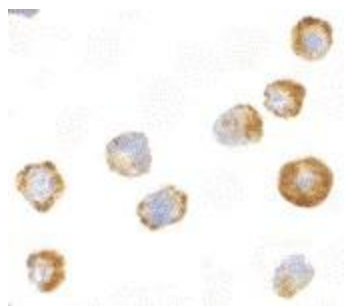
**Protein Families:** Druggable Genome, Protein Kinase

**Protein Pathways:** Amyotrophic lateral sclerosis (ALS), MAPK signaling pathway, Neurotrophin signaling pathway

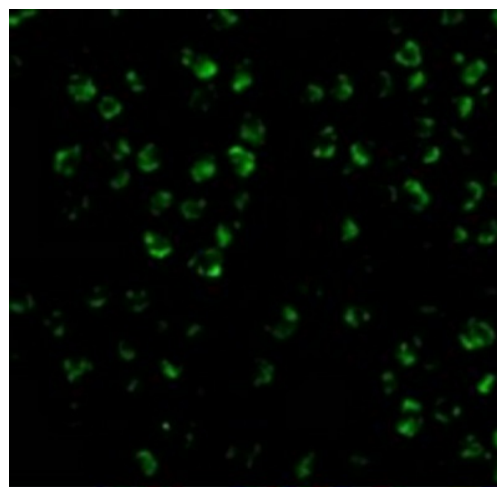
**Product images:**



Western blot analysis of ASK1 in SW1353 cell lysate with ASK1 antibody at (A) 0.5, (B) 1, and (C) 2 ug/mL.



Immunocytochemistry of ASK1 in A431 cells with ASK1 antibody at 2 ug/mL.



Immunofluorescence of ASK1 in 3T3 cells with ASK1 antibody at 20 ug/mL.