

Product datasheet for **TA306279**

BAP29 (BCAP29) Rabbit Polyclonal Antibody

Product data:

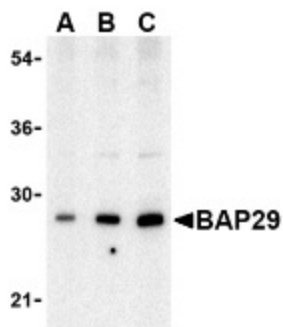
Product Type:	Primary Antibodies
Applications:	IF, IHC, WB
Recommended Dilution:	WB: 0.5 - 2 ug/mL, ICC: 10 ug/mL, IF: 20 ug/mL
Reactivity:	Human, Mouse, Rat
Host:	Rabbit
Isotype:	IgG
Clonality:	Polyclonal
Immunogen:	BAP29 antibody was raised against a 17 amino acid peptide from near the center of human Bap29 Bap29 antibody is specific for isoform a of Bap29 .
Formulation:	PBS containing 0.02% sodium azide.
Concentration:	1ug/ul
Purification:	Affinity chromatography purified via peptide column
Conjugation:	Unconjugated
Storage:	Store at -20°C as received.
Stability:	Stable for 12 months from date of receipt.
Gene Name:	B-cell receptor-associated protein 29
Database Link:	NP_001008405 Entrez Gene 12033 Mouse Entrez Gene 298943 Rat Entrez Gene 55973 Human Q9UHQ4
Background:	Bap29 and the related protein Bap31 are endoplasmic reticulum (ER) and ER-vesicle membrane proteins and members of the B-cell receptor-associated protein family (1,2). These two proteins are highly homologous and can form homo- and heterodimers. Both Bap29 and Bap31 interact with membrane-bound immunoglobulins (mlgs), such as IgM and IgD, which with Ig-alpha/Ig-beta heterodimers form B cell antigen receptors (3). Binding of the Bap29/Bap31 heterodimer correlates with the ER retention of non-Ig-alpha/Ig-beta bound mlg complexes, suggesting that Bap29 and Bap31 may act as chaperones transmembrane regions of various proteins (3). Bap29 possesses multiple isoforms.
Synonyms:	BAP29



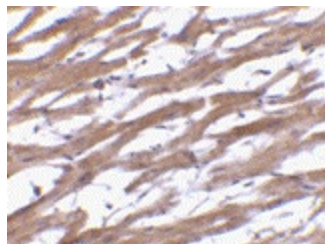
[View online »](#)

Protein Families: Druggable Genome, Transmembrane

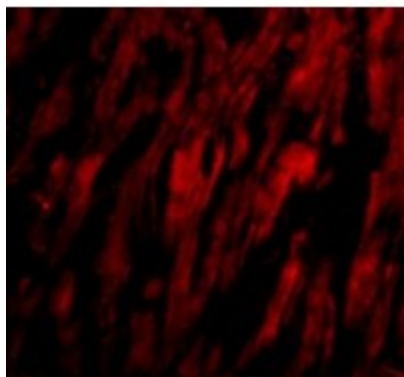
Product images:



Western blot analysis of Bap29 in human heart tissue lysate with Bap29 antibody at (A) 0.5, (B) 1 and (C) 2ug/ml.



Immunohistochemistry of BAP29 in human heart tissue with BAP29 antibody at 10 ug/ml.



Immunofluorescence of BAP29 in Human Heart cells with BAP29 antibody at 20 ug/mL.