

## Product datasheet for **TA306278**

### **BAP31 (BCAP31) Rabbit Polyclonal Antibody**

#### **Product data:**

Product Type:	Primary Antibodies
Applications:	IHC, WB
Recommended Dilution:	WB: 0.5 - 2 ug/mL, ICC: 2 ug/mL
Reactivity:	Human, Mouse, Rat
Host:	Rabbit
Isotype:	IgG
Clonality:	Polyclonal
Immunogen:	BAP31 antibody was raised against a 17 amino acid peptide from near the carboxy terminus of human BAP31.
Formulation:	PBS containing 0.02% sodium azide.
Concentration:	1ug/ul
Purification:	Affinity chromatography purified via peptide column
Conjugation:	Unconjugated
Storage:	Store at -20°C as received.
Stability:	Stable for 12 months from date of receipt.
Gene Name:	B-cell receptor-associated protein 31
Database Link:	<a href="#">NP_005736</a> <a href="#">Entrez Gene 10134 Human</a> <a href="#">P51572</a>



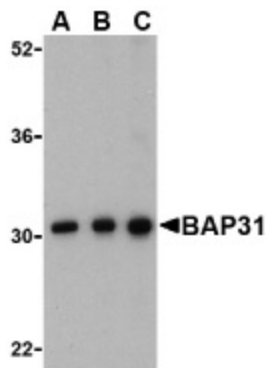
[View online »](#)

**Background:**

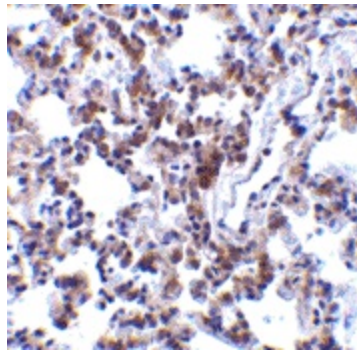
Bap31 and the related protein Bap29 are endoplasmic reticulum (ER) and ER-vesicle membrane proteins and members of the B-cell receptor-associated protein family (1,2). These two proteins are highly homologous and can form homo- and heterodimers. Bap31 is thought to be involved in the intracellular trafficking of several molecules such as MHC Class I molecules and CD11b/CD18 (3,4). It may also play a role in the initiation of ER stress-induced apoptosis through its association with caspase-8 via a death effector domain in its cytoplasmic tail, possibly through the promotion of membrane fragmentation and the release of cytochrome c from mitochondria (5). Bap31 itself contains two caspase cleavage sites and is cleaved during apoptosis. The p20 fragment of Bap31, when expressed ectopically, is also a potent inducer cell death (5).

**Synonyms:**

6C6-AG; BAP31; CDM; DDCH; DXS1357E

**Product images:**

Western blot analysis of BAP31 in Ramos cell lysate with BAP31 antibody at (A) 0.5, (B) 1 and (C) 2ug/ml.



Immunohistochemistry of BAP31 in rat lung tissue with BAP31 antibody at 2 ug/ml.