

Product datasheet for **TA306269**

TLR5 Rabbit Polyclonal Antibody

Product data:

Product Type:	Primary Antibodies
Applications:	IHC, WB
Recommended Dilution:	WB: 0.5 - 2 ug/mL, ICC: 10 ug/mL
Reactivity:	Human, Mouse, Rat
Host:	Rabbit
Isotype:	IgG
Clonality:	Polyclonal
Immunogen:	TLR5 antibody was raised against a peptide corresponding to 16 amino acids near the center of human TLR5.
Formulation:	PBS containing 0.02% sodium azide.
Concentration:	1ug/ul
Purification:	Affinity chromatography purified via peptide column
Conjugation:	Unconjugated
Storage:	Store at -20°C as received.
Stability:	Stable for 12 months from date of receipt.
Gene Name:	toll like receptor 5
Database Link:	NP_003259 Entrez Gene 53791 Mouse Entrez Gene 289337 Rat Entrez Gene 7100 Human O60602



[View online »](#)

Background:

Toll-like receptors (TLRs) are evolutionarily conserved pattern-recognition molecules resembling the toll proteins that mediate antimicrobial responses in *Drosophila*. These proteins recognize different microbial products during infection and serve as an important link between the innate and adaptive immune responses (1,2). The TLRs act through adaptor molecules such as MyD88 and TIRAP to activate various kinases and transcription factors (3) so the organism can respond to potential infection. TLR5 recognizes flagellin from both Gram-positive and Gram-negative bacteria and will cause the activation of NF-kappaB, leading to the activation of TNF-A and other cytokines (4). A common TLR5 stop codon polymorphism that disrupts TLR5 signaling is associated with susceptibility to Legionnaires' disease and demonstrates the importance of TLR5 in the innate immune response (5).

Synonyms:

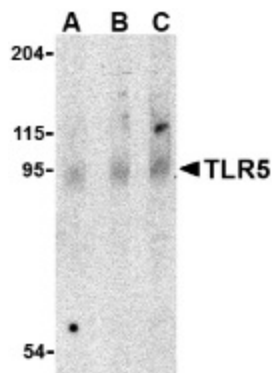
MELIOS; SLE1; SLEB1; TIL3

Protein Families:

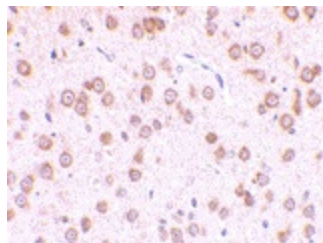
Druggable Genome, Transmembrane

Protein Pathways:

Pathogenic *Escherichia coli* infection, Toll-like receptor signaling pathway

Product images:

Western blot analysis of TLR5 in rat brain cell lysate with TLR5 antibody at (A) 0.5, (B) 1 and (C) 2 ug/ml.



Immunohistochemistry of TLR5 in rat brain tissue with TLR5 antibody at 10 ug/ml.