

Product datasheet for **TA306268**

TLR3 Rabbit Polyclonal Antibody

Product data:

Product Type:	Primary Antibodies
Applications:	IF, WB
Recommended Dilution:	WB: 0.5 - 2 ug/mL, ICC: 10 ug/mL, IF: 2 ug/mL
Reactivity:	Human, Mouse
Host:	Rabbit
Isotype:	IgG
Clonality:	Polyclonal
Immunogen:	TLR3 antibody was raised against a peptide corresponding to 15 amino acids near the amino terminus of human TLR3.
Formulation:	PBS containing 0.02% sodium azide.
Concentration:	1ug/ul
Purification:	Ion exchange chromatography purified
Conjugation:	Unconjugated
Storage:	Store at -20°C as received.
Stability:	Stable for 12 months from date of receipt.
Gene Name:	toll like receptor 3
Database Link:	NP_003256 Entrez Gene 142980 Mouse Entrez Gene 7098 Human O15455

Background: Toll-like receptors (TLRs) are evolutionarily conserved pattern-recognition molecules resembling the toll proteins that mediate antimicrobial responses in *Drosophila*. These proteins recognize different microbial products during infection and serve as an important link between the innate and adaptive immune responses (1,2). The TLRs act through adaptor molecules such as MyD88 and TIRAP to activate various kinases and transcription factors (3) so the organism can respond to potential infection. TLR3 is known to recognize viral double-stranded (ds) RNA, a molecular pattern associated with viral infection (4). Recently it has been shown to recognize viruses such as Influenza A (5) and West Nile Virus and can mediate entry of at least West Nile Virus (6).



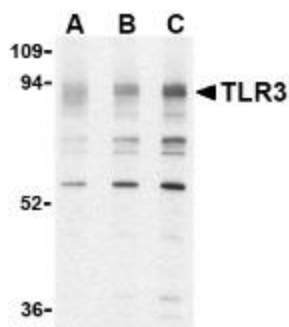
[View online »](#)

Synonyms: CD283; IIAE2

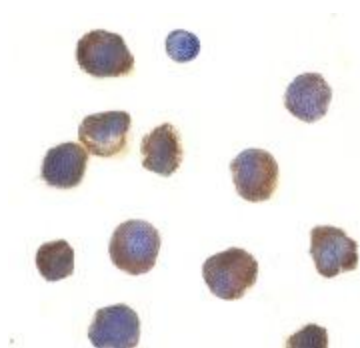
Protein Families: Druggable Genome, Transmembrane

Protein Pathways: Toll-like receptor signaling pathway

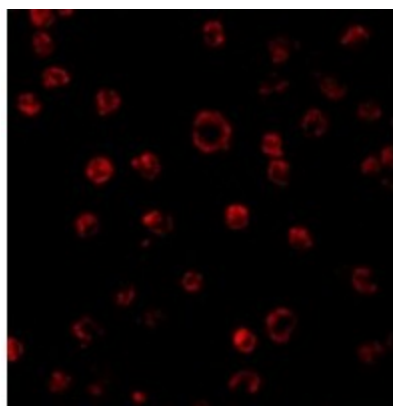
Product images:



Western blot analysis of TLR3 in K562 cell lysate with TLR3 antibody at (A) 0.5, (B) 1 and (C) 2 ug/mL.



Immunocytochemistry of TLR3 in K562 cells with TLR3 antibody at 10 ug/mL.



Immunofluorescence of TLR3 in K562 cells with TLR3 antibody at 2 ug/mL.