

## Product datasheet for **TA306267**

### TLR3 Rabbit Polyclonal Antibody

#### Product data:

Product Type:	Primary Antibodies
Applications:	IF, IHC, WB
Recommended Dilution:	WB: 1 - 2 ug/mL, ICC: 1 ug/mL, IF: 10 ug/mL
Reactivity:	Human, Mouse
Host:	Rabbit
Isotype:	IgG
Clonality:	Polyclonal
Immunogen:	TLR3 antibody was raised against a peptide corresponding to 15 amino acids near the carboxy terminus of human TLR3. The immunogen is located within amino acids 780 - 830 of TLR3.
Formulation:	PBS containing 0.02% sodium azide.
Concentration:	1ug/ul
Purification:	Ion exchange chromatography purified
Conjugation:	Unconjugated
Storage:	Antibody can be stored at 4°C up to one year. Antibodies should not be exposed to prolonged high temperatures.
Stability:	Stable for 12 months from date of receipt.
Gene Name:	toll like receptor 3
Database Link:	<a href="#">NP_003256</a> <a href="#">Entrez Gene 142980 Mouse</a> <a href="#">Entrez Gene 7098 Human</a> <a href="#">O15455</a>



[View online »](#)

**Background:**

Toll-like receptors (TLRs) are evolutionarily conserved pattern-recognition molecules resembling the toll proteins that mediate antimicrobial responses in *Drosophila*. These proteins recognize different microbial products during infection and serve as an important link between the innate and adaptive immune responses (1,2). The TLRs act through adaptor molecules such as MyD88 and TIRAP to activate various kinases and transcription factors (3) so the organism can respond to potential infection. TLR3 is known to recognize viral double-stranded (ds) RNA, a molecular pattern associated with viral infection (4). Recently it has been shown to recognize viruses such as Influenza A (5) and West Nile Virus and can mediate entry of at least West Nile Virus (6).

**Synonyms:**

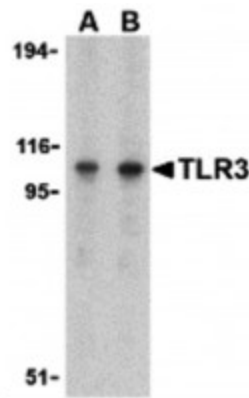
CD283; IIAE2

**Protein Families:**

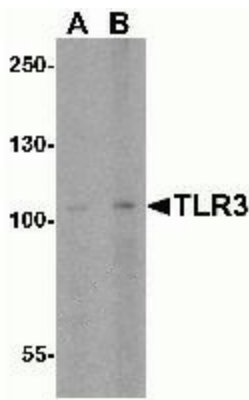
Druggable Genome, Transmembrane

**Protein Pathways:**

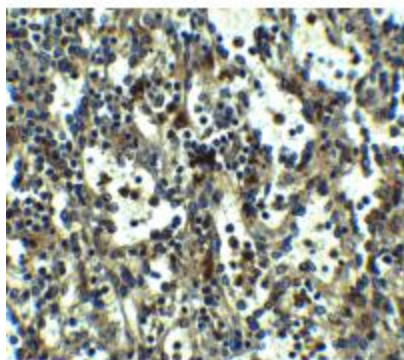
Toll-like receptor signaling pathway

**Product images:**

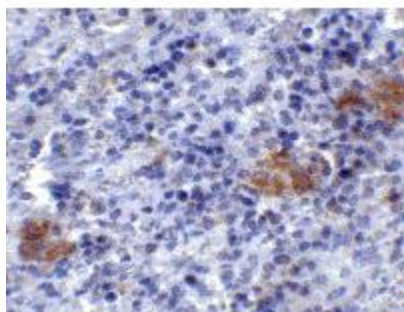
Western blot analysis of TLR3 in Daudi cell lysate with TLR3 antibody at (A) 1 and (B) 2ug/ml.



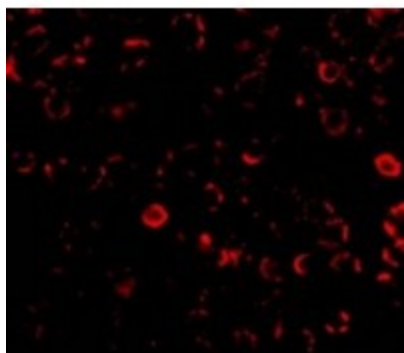
Western blot analysis of TLR3 expression in mouse spleen tissue lysate with TLR3 antibody at (A) 0.5 and (B) 1ug/ml.



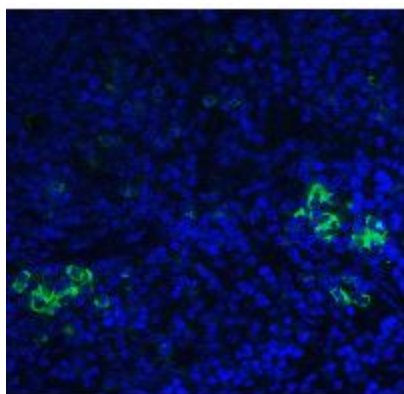
Immunohistochemistry of TLR3 in human spleen tissue with TLR3 antibody at 5ug/ml.



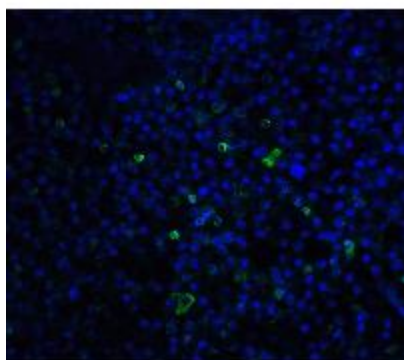
Immunohistochemistry of TLR3 in mouse spleen tissue with TLR3 antibody at 2ug/ml.



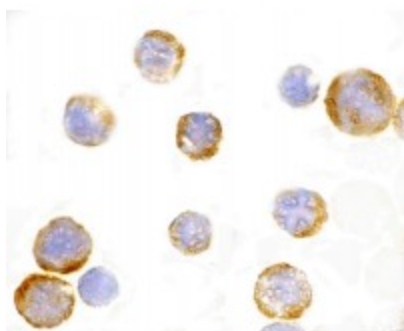
Immunofluorescence of TLR3 in E14 cells with TLR3 antibody at 10ug/ml.



Immunofluorescence of TLR3 in mouse spleen tissue with TLR3 antibody at 20ug/ml.



Immunofluorescence of TLR3 in human spleen tissue with TLR3 antibody at 20ug/ml.



Immunocytochemistry of TLR3 in EL4 cells with TLR3 antibody at 1ug/ml.