

Product datasheet for **TA306262**

LAMP1 Rabbit Polyclonal Antibody

Product data:

Product Type:	Primary Antibodies
Applications:	IF, WB
Recommended Dilution:	WB: 1 - 2 ug/mL, ICC: 20 ug/mL, IF: 20 ug/mL
Reactivity:	Human, Mouse, Rat
Host:	Rabbit
Isotype:	IgG
Clonality:	Polyclonal
Immunogen:	LAMP-1 antibody was raised against a 15 amino acid peptide from near the center of human LAMP-1.
Formulation:	PBS containing 0.02% sodium azide.
Purification:	Affinity chromatography purified via peptide column
Conjugation:	Unconjugated
Storage:	Antibody can be stored at 4°C up to one year. Antibodies should not be exposed to prolonged high temperatures.
Stability:	Stable for 12 months from date of receipt.
Gene Name:	lysosomal associated membrane protein 1
Database Link:	NP_005552 Entrez Gene 16783 Mouse Entrez Gene 25328 Rat Entrez Gene 3916 Human P11279
Background:	Autophagy, the process of bulk degradation of cellular proteins through an autophagosomic-lysosomal pathway is important for normal growth control and may be defective in tumor cells. It is involved in the preservation of cellular nutrients under starvation conditions as well as the normal turnover of cytosolic components (1,2) and is negatively regulated by TOR (Target of rapamycin) (3). A protein recently found to be involved in autophagy, LAMP-2, is a highly glycosylated protein associated with the lysosome (4,5). LAMP-1 shares much homology to LAMP-2 and is thought to have overlapping functions. Mice lacking LAMP-1 had very minor defects compared to those deficient in LAMP-2 expression (6). However, the loss of both proteins resulted in embryonic lethality (7), suggesting that each protein possesses some unique and necessary functions.



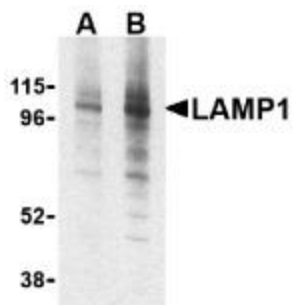
[View online »](#)

Synonyms: CD107a; LAMPA; LGP120

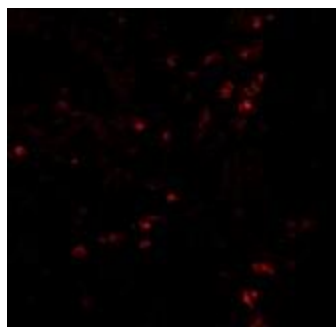
Protein Families: ES Cell Differentiation/IPS, Transmembrane

Protein Pathways: Lysosome

Product images:



Western blot analysis of LAMP-1 in EL4 cell lysate with LAMP-1 antibody at (A) 1 and (B) 2 ug/mL.



Immunofluorescence of LAMP-1 in human colon tissue with LAMP-1 antibody at 20 ug/mL.