

## Product datasheet for **TA306261**

### Lamp2 Rabbit Polyclonal Antibody

#### Product data:

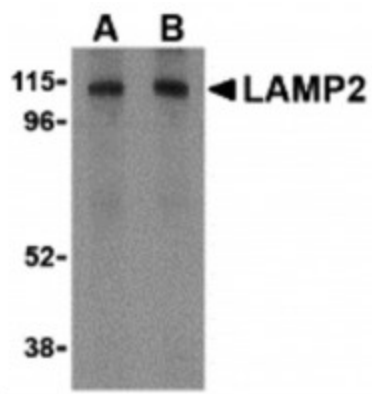
Product Type:	Primary Antibodies
Applications:	IF, IHC, WB
Recommended Dilution:	WB: 1 - 2 ug/mL, ICC: 10 ug/mL
Reactivity:	Human, Mouse
Host:	Rabbit
Isotype:	IgG
Clonality:	Polyclonal
Immunogen:	LAMP-2 antibody was raised against a 17 amino acid synthetic peptide from near the carboxy terminus of human LAMP-2. The immunogen is located within the last 50 amino acids of LAMP-2.
Formulation:	PBS containing 0.02% sodium azide.
Purification:	Affinity chromatography purified via peptide column
Conjugation:	Unconjugated
Storage:	Store at -20°C as received.
Stability:	Stable for 12 months from date of receipt.
Gene Name:	lysosomal-associated membrane protein 2
Database Link:	<a href="#">NP_054701</a> <a href="#">Entrez Gene 16784 Mouse</a> <a href="#">P17047</a>
Background:	Autophagy, the process of bulk degradation of cellular proteins through an autophagosomic-lysosomal pathway is important for normal growth control and may be defective in tumor cells. It is involved in the preservation of cellular nutrients under starvation conditions as well as the normal turnover of cytosolic components (1,2) and is negatively regulated by TOR (Target of rapamycin) (3). LAMP-2, a highly glycosylated protein associated with the lysosome (4), has recently been shown to be important in autophagy as mice deficient in this protein failed to convert autophagic vacuoles into vacuoles (5) leading to impaired degradation of long-lived proteins. This correlates with the finding that human LAMP-2 deficiency causing Danon's disease is associated with the accumulation of autophagic material in striated myocytes (6). LAMP-2 exists in multiple isoforms (7).



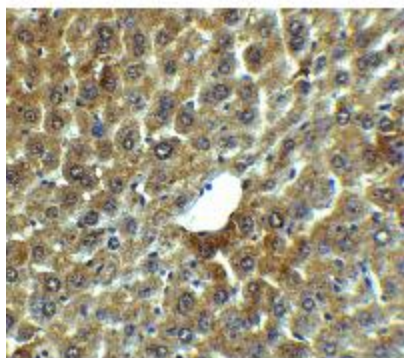
[View online »](#)

Synonyms: CD107b; LAMP-2; LAMPB; LGP110

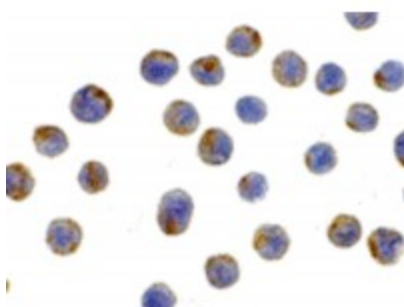
### Product images:



Western blot analysis of LAMP-2 in HepG2 cell lysate with LAMP-2 antibody at (A) 1 and (B) 2ug/ml.



Immunohistochemistry of LAMP-2 in mouse liver tissue with LAMP-2 Antibody at 5ug/ml.



Immunocytochemistry of LAMP-2 in HepG2 cells with LAMP-2 antibody at 10ug/ml.