

## Product datasheet for **TA306260**

### CRMP1 Rabbit Polyclonal Antibody

#### Product data:

Product Type:	Primary Antibodies
Applications:	IF, IHC, WB
Recommended Dilution:	WB: 1 - 4 ug/mL, ICC: 10 ug/mL, IF: 20 ug/mL
Reactivity:	Human, Mouse
Host:	Rabbit
Isotype:	IgG
Clonality:	Polyclonal
Immunogen:	CRMP1 antibody was raised against a 16 amino acid peptide from near the center of human CRMP1.
Formulation:	PBS containing 0.02% sodium azide.
Concentration:	1ug/ul
Purification:	Affinity chromatography purified via peptide column
Conjugation:	Unconjugated
Storage:	Store at -20°C as received.
Stability:	Stable for 12 months from date of receipt.
Gene Name:	collapsin response mediator protein 1
Database Link:	<a href="#">AAH07613</a> <a href="#">Entrez Gene 1400 Human</a> <a href="#">Q14194</a>



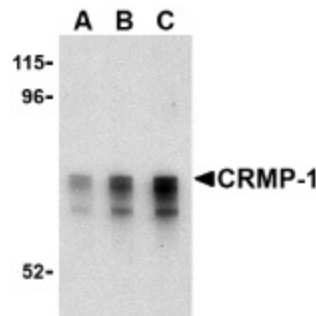
[View online »](#)

**Background:**

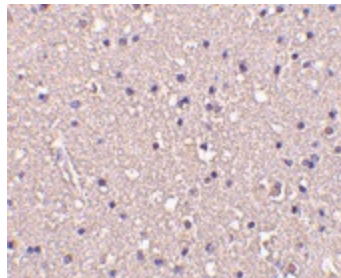
Collapsin-response mediator proteins (CRMPs) are highly expressed in the developing brain where they play major roles in axonal outgrowth, neurite differentiation, and apoptosis (1). Their continued expression in areas of high synaptic remodeling such as the cerebellum, hippocampus, and the olfactory system suggests that these proteins may also be involved in adult brain plasticity (2). CRMP-1 was initially identified as a dihydro-pyrimidinase expressed exclusively in brain (3); later studies have shown that it is involved with neurotrophin (NT) 3-induced neurite formation and outgrowth (4). CRMP-1 localization switches from axonal to somatodendritic when neurons reach functional maturity, suggesting that it is involved in early neuronal differentiation as well as in later processes related to the survival or death of the newly generated neurons (5).

**Synonyms:**

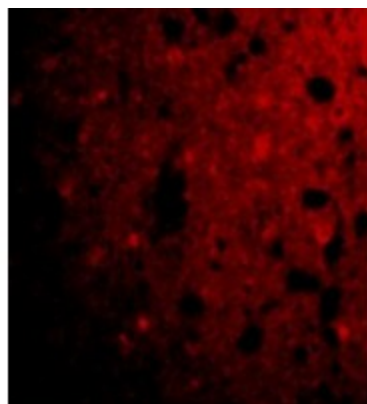
CRMP-1; DPYSL1; DRP-1; DRP1; ULIP-3

**Product images:**


Western blot analysis of CRMP1 in Caco-2 cell lysate with CRMP1 antibody at (A) 1, (B) 2 and (C) 4 ug/ml.



Immunohistochemistry of CRMP1 in human brain tissue with CRMP1 antibody at 10 ug/ml.



Immunofluorescence of CRMP1 in Human Brain cells with CRMP1 antibody at 20 ug/mL.