

Product datasheet for **TA306251**

PTRH2 Rabbit Polyclonal Antibody

Product data:

Product Type:	Primary Antibodies
Applications:	IF, WB
Recommended Dilution:	WB: 1 - 4 ug/mL, ICC: 2 ug/mL, IF: 20 ug/mL
Reactivity:	Human, Mouse, Rat
Host:	Rabbit
Isotype:	IgG
Clonality:	Polyclonal
Immunogen:	Bit1 antibody was raised against a 15 amino acid peptide from near the amino-terminus of human Bit1.
Formulation:	PBS containing 0.02% sodium azide.
Concentration:	1ug/ul
Purification:	Affinity chromatography purified via peptide column
Conjugation:	Unconjugated
Storage:	Store at -20°C as received.
Stability:	Stable for 12 months from date of receipt.
Gene Name:	peptidyl-tRNA hydrolase 2
Database Link:	NP_057161 Entrez Gene 217057 Mouse Entrez Gene 287593 Rat Entrez Gene 51651 Human Q9Y3E5



[View online »](#)

Background:

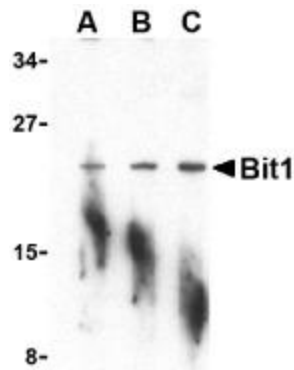
Adhesion to extracellular matrix regulates cell survival through both integrin engagement and appropriate cell spreading. Anoikis is the molecular mechanism of apoptosis induced by integrin detachment (1). Bit1 (Bcl-2 inhibitor of transcription 1) was recently identified as being involved in this process (2). Bit1 is a mitochondrial protein that is released into the cytoplasm upon onset of apoptosis where it forms a complex with AES, a small Groucho/transducin-like enhancer of split (TLE) protein and induces caspase-independent apoptosis. Both AES and TLE proteins are transcriptional co-repressors that play important roles in neurogenesis, segmentation, and sex determination (3). It has been suggested that Bit1-AES complexes turn off a survival-promoting gene transcription program controlled by TLE (2). Interestingly, apoptosis of cells transfected with Bit1 and AES could be inhibited if the cells were allowed to attach to fibronectin through the alpha5beta1 integrin suggesting that the Bit1-AES pathway contributing to anoikis is regulated by integrins, and in particular, the alpha5beta1 integrin (2)

Synonyms:

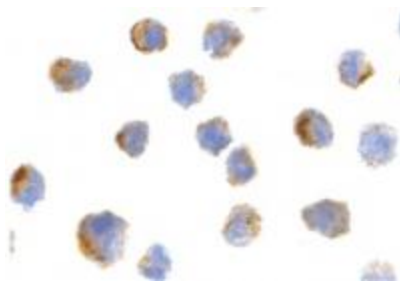
BIT1; CFAP37; CGI-147; IMNEPD; PTH; PTH 2; PTH2

Protein Families:

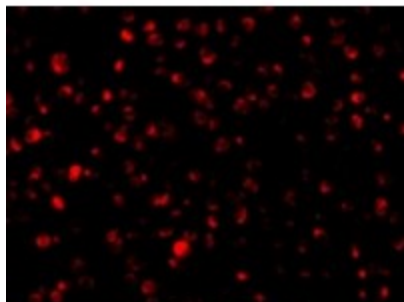
Transmembrane

Product images:

Western blot analysis of Bit1 in A-20 cell lysate with Bit1 antibody at (A) 1, (B) 2, and (C) 4 ug/mL.



Immunocytochemistry of Bit1 in 3T3 cells with Bit1 antibody at 2 ug/mL.



Immunofluorescence of Bit1 in 3T3 cells with Bit1 antibody at 20 ug/mL.