

Product datasheet for **TA306249**

TRAF3 Rabbit Polyclonal Antibody

Product data:

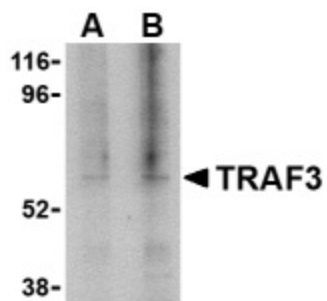
| | |
|-----------------------|---|
| Product Type: | Primary Antibodies |
| Applications: | IF, WB |
| Recommended Dilution: | WB: 1 - 2 ug/mL, IF: 2 ug/mL |
| Reactivity: | Human, Mouse |
| Host: | Rabbit |
| Isotype: | IgG |
| Clonality: | Polyclonal |
| Immunogen: | TRAF3 antibody was raised against a 16 amino acid peptide from near the carboxy terminus of human TRAF3. |
| Formulation: | PBS containing 0.02% sodium azide. |
| Concentration: | 1 mg/ml |
| Purification: | Affinity chromatography purified via peptide column |
| Conjugation: | Unconjugated |
| Storage: | Store at -20°C as received. |
| Stability: | Stable for 12 months from date of receipt. |
| Gene Name: | TNF receptor associated factor 3 |
| Database Link: | NP_663777 Entrez Gene 7187 Human Q13114 |
| Background: | Tumor necrosis factor (TNF) receptor associated factors (TRAFs) are the major signal transducers for the TNF receptor superfamily and the interleukin-1 receptor/Toll-like receptor (IL-1/TLR) superfamily (1). TRAF3 was first identified by its interaction with CD40 and the Epstein-Barr virus transforming protein LMP1 (2,3). Several TRAF3 mRNA splice variants exist and some of these can activate the transcription factor NF-kappaB (4). Besides CD40, TRAF3 also interacts with the TRFR superfamily member lymphotoxin-beta receptor (LTbetaR) in association with TRAF2 and the apoptosis inhibitors cIAP1 and Smac. It has been suggested that TRAF3 induces mitochondria-mediated apoptosis upon binding of the TNF family cytokine LIGHT by LTbetaR (5). |



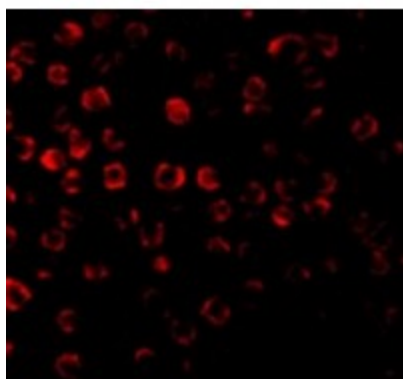
[View online »](#)

Synonyms: CAP-1; CAP1; CD40bp; CRAF1; IIAE5; LAP1

Product images:



Western blot analysis of TRAF3 in 3T3 cell lysate with TRAF3 antibody at (A) 1, and (B) 2 ug/ml.



Immunofluorescence of TRAF3 in 3T3 cells with TRAF3 antibody at 2 ug/mL.