

## Product datasheet for **TA306244**

### Precerebellin (CBLN1) Rabbit Polyclonal Antibody

#### Product data:

Product Type:	Primary Antibodies
Applications:	IHC, WB
Recommended Dilution:	WB: 2 - 4 ug/mL, ICC: 2 ug/mL
Reactivity:	Human, Mouse, Rat
Host:	Rabbit
Isotype:	IgG
Clonality:	Polyclonal
Immunogen:	Precerebellin antibody was raised against a 15 amino acid peptide from the middle of human precerebellin.
Formulation:	PBS containing 0.02% sodium azide.
Concentration:	1 mg/ml
Purification:	Affinity chromatography purified via peptide column
Conjugation:	Unconjugated
Storage:	Store at -20°C as received.
Stability:	Stable for 12 months from date of receipt.
Gene Name:	cerebellin 1 precursor
Database Link:	<a href="#">NP_004343</a> <a href="#">Entrez Gene 12404 Mouse</a> <a href="#">Entrez Gene 498922 Rat</a> <a href="#">Entrez Gene 869 Human</a> <a href="#">P23435</a>



[View online »](#)

**Background:**

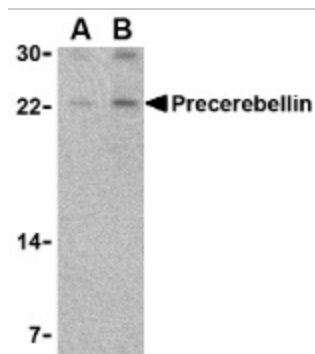
Precerebellin is the precursor of the brain-specific hexadecapeptide cerebellin, a protein with substantial similarity to the globular region of the B chain of complement component C1q (1). Cerebellin exerts neuromodulatory functions by directly stimulating norepinephrine release via the adenylate cyclase/pka- dependent signaling pathway (2); and indirectly enhances adrenocortical secretion in vivo, through a paracrine mechanism involving medullary catecholamine release (3). The active form of precerebellin is highly enriched in postsynaptic structures of cerebellar Purkinje cells in cartwheel neurons of the dorsal cochlear nucleus (4). Because precerebellin belongs to the C1q/tumor necrosis factor superfamily of secreted proteins and has similarity to adiponectin and CTRP3, it has been suggested that precerebellin possesses functions other than those already stated (5).

**Synonyms:**

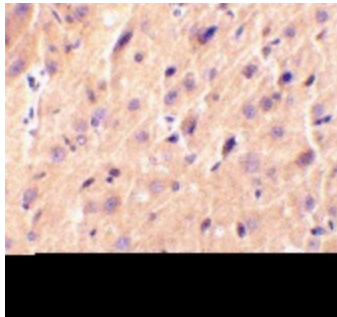
cerebellin 1; cerebellin 1 precursor

**Protein Families:**

Secreted Protein

**Product images:**

Western blot analysis of precerebellin in mouse cerebellum lysate with precerebellin antibody at (A) 2 and (B) 4 ug/ml.



Immunohistochemical staining of rat brain tissue using precerebellin antibody at 2 ug/ml.