

Product datasheet for **TA306239**

CTRP6 (C1QTNF6) Rabbit Polyclonal Antibody

Product data:

Product Type:	Primary Antibodies
Applications:	IF, IHC, WB
Recommended Dilution:	WB: 0.5 - 2 ug/mL, ICC: 10 ug/mL, IF: 20 ug/mL
Reactivity:	Human, Mouse, Rat
Host:	Rabbit
Isotype:	IgG
Clonality:	Polyclonal
Immunogen:	CTRP6 antibody was raised against a 15 amino acid peptide from near the center of human CTRP6.
Formulation:	PBS containing 0.02% sodium azide.
Concentration:	1ug/ul
Purification:	Affinity chromatography purified via peptide column
Conjugation:	Unconjugated
Storage:	Store at -20°C as received.
Stability:	Stable for 12 months from date of receipt.
Gene Name:	C1q and tumor necrosis factor related protein 6
Database Link:	AAQ88740 Entrez Gene 114904 Human Q9BXI9



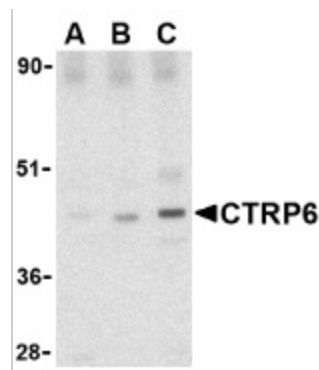
[View online »](#)

Background:

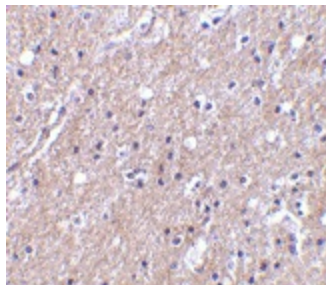
Adipose tissue of an organism plays a major role in regulating physiologic and pathologic processes such as metabolism and immunity by producing and secreting a variety of bioactive molecules termed adipokines (reviewed in 1). One highly conserved family of adipokines is adiponectin/ACRP30 and its structural and functional paralogs, the C1q/tumor necrosis factor- γ -related proteins (CTRPs) 1-7 (2). Unlike adiponectin, which is expressed exclusively by differentiated adipocytes, the CTRPs are expressed in a wide variety of tissues (3). These proteins are thought to act mainly on liver and muscle tissue to control glucose and lipid metabolism. An analysis of the crystal structure of adiponectin revealed a structural and evolutionary link between TNF and C1q-containing proteins, suggesting that these proteins arose from a common ancestral innate immunity gene (4). CTRP6 contains at least 4 glycosylation motifs, suggesting that CTRP6 may be highly post-translationally modified (3).

Synonyms:

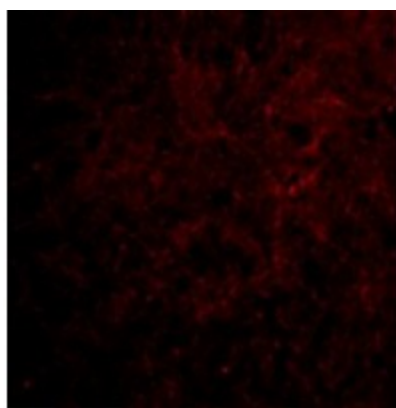
CTFP6; CTRP6; ZACRP6

Product images:


Western blot analysis of CTRP6 in mouse brain cell lysate with CTRP6 antibody at (A) 0.5, (B) 1 and (C) 2 μ g/ml.



Immunohistochemistry of CTRP6 in human brain tissue with CTRP6 antibody at 10 μ g/ml.



Immunofluorescence of CTRP6 in Human Brain cells with CTRP6 antibody at 20 ug/mL.