

Product datasheet for **TA306224**

PTEN Rabbit Polyclonal Antibody

Product data:

Product Type:	Primary Antibodies
Applications:	IF, WB
Recommended Dilution:	WB: 1 - 2 ug/mL, IF: 2 ug/mL
Reactivity:	Human, Mouse
Host:	Rabbit
Isotype:	IgG
Clonality:	Polyclonal
Immunogen:	PTEN antibody was raised against a 15 amino acid peptide from near the amino terminus of human PTEN.
Formulation:	PBS containing 0.02% sodium azide.
Concentration:	1ug/ul
Purification:	Affinity chromatography purified via peptide column
Conjugation:	Unconjugated
Storage:	Store at -20°C as received.
Stability:	Stable for 12 months from date of receipt.
Gene Name:	phosphatase and tensin homolog
Database Link:	NP_000305 Entrez Gene 19211 Mouse Entrez Gene 5728 Human P60484



[View online »](#)

Background:

PTEN (phosphatase and tensin homologue deleted on chromosome ten) is a dual-specificity phosphatase (with both protein and lipid phosphatase activity) first identified as a tumor suppressor gene. PTEN indirectly activates the AKT/PI3K pathway, an important signaling pathway for cell growth and proliferation by keeping levels of the second messenger PIP3 low, thereby preventing phosphoinositide-dependent kinase-1 (PDK-1) from phosphorylating and activating AKT. Expression of wild-type PTEN causes growth arrest in many cancer cell lines, but expression of a PTEN protein containing a mutation that blocks its lipid phosphatase activity failed to suppress growth of glioma cell lines suggesting that the tumor suppressive effect of PTEN is mediated solely by its lipid phosphatase activity. Other activities include the inhibition of insulin stimulated MAPK activation by blocking the insulin-receptor substrate (IRS)-1 phosphorylation and assembly of the IRS-1/Grb2/Sos complex.

Synonyms:

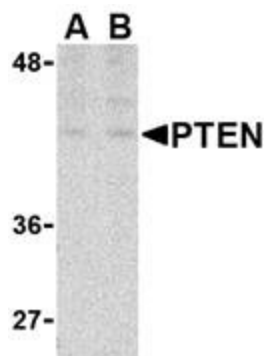
10q23del; BZS; CWS1; DEC; GLM2; MHAM; MMAC1; PTEN1; TEP1

Protein Families:

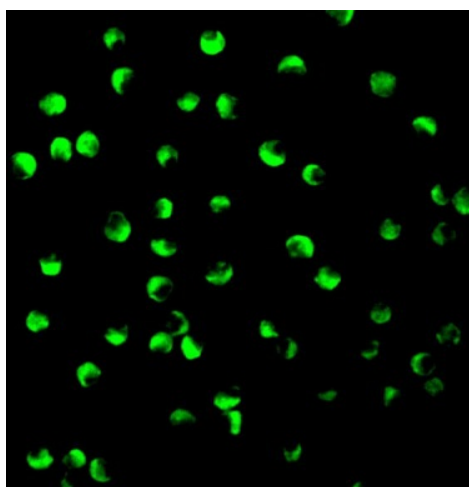
Druggable Genome, Phosphatase

Protein Pathways:

Endometrial cancer, Focal adhesion, Glioma, Inositol phosphate metabolism, Melanoma, p53 signaling pathway, Pathways in cancer, Phosphatidylinositol signaling system, Prostate cancer, Small cell lung cancer, Tight junction

Product images:

Western blot analysis of PTEN in P815 cell lysate with PTEN (NT) antibody at (A) 1 and (B) 2 ug/ml.



Immunofluorescence of PTEN in P815 cells with PTEN antibody at 2 ug/mL.