

Product datasheet for **TA306221**

RSK1 p90 (RPS6KA1) Rabbit Polyclonal Antibody

Product data:

Product Type:	Primary Antibodies
Applications:	IF, WB
Recommended Dilution:	WB: 2.5 - 10 ug/mL, ICC: 10 ug/mL, IF: 20 ug/mL
Reactivity:	Human
Host:	Rabbit
Isotype:	IgG
Clonality:	Polyclonal
Immunogen:	RPS6K1 antibody was raised against a 16 amino acid peptide from near the carboxy-terminus of human RPS6K1.
Formulation:	PBS containing 0.02% sodium azide.
Concentration:	1ug/ul
Purification:	Affinity chromatography purified via peptide column
Conjugation:	Unconjugated
Storage:	Store at -20°C as received.
Stability:	Stable for 12 months from date of receipt.
Gene Name:	ribosomal protein S6 kinase A1
Database Link:	AAC82497 Entrez Gene 6195 Human Q15418

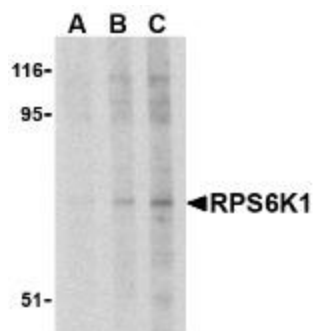
Background: Ribosomal protein S6 kinase 1 (RPS6K1) is the best characterized effector of the mammalian Target of Rapamycin (TOR), an evolutionarily conserved serine/threonine kinase that regulates cell growth and cell cycle through its ability to integrate signals from nutrient levels and growth factors (1,2). Nutrients and growth factors stimulate a complex including TOR, raptor (regulatory associated protein of TOR), and G?L to phosphorylate RPS6K1 and the eukaryotic initiation factor 4E binding protein (4EBP1), leading to increased protein synthesis and cell growth (3). RPS6K1 is thought to desensitize tissues to insulin as mice deficient in RPS6K1 have been shown to be hypersensitive to insulin and impervious to obesity-induced insulin resistance seen in wild type obese mice (4).



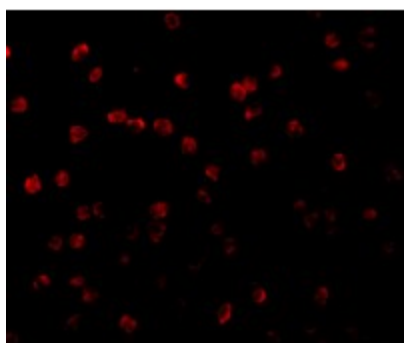
[View online »](#)

Synonyms: HU-1; MAPKAPK1A; p90Rsk; RSK; RSK1

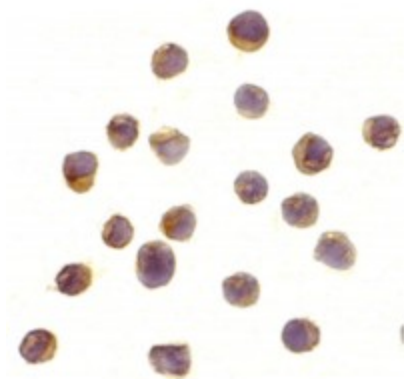
Product images:



Western blot analysis of RPS6K1 in Jurkat cell lysate with RPS6K1 antibody at (A) 2.5, (B) 5 and (C) 10 µg/mL.



Immunofluorescence of RPS6 Kinase in Jurkat cells with RPS6 Kinase antibody at 20 µg/mL.



Immunocytochemistry of RPS6K1 in Jurkat cells with RPS6K1 antibody at 10 µg/mL.