

Product datasheet for **TA306216**

RHEB Rabbit Polyclonal Antibody

Product data:

Product Type:	Primary Antibodies
Applications:	IF, IHC, WB
Recommended Dilution:	WB: 1 - 4 ug/mL, ICC: 2 ug/mL, IF: 20 ug/mL
Reactivity:	Human, Mouse, Rat
Host:	Rabbit
Isotype:	IgG
Clonality:	Polyclonal
Immunogen:	Rheb antibody was raised against a 15 amino acid peptide from the middle region of human Rheb.
Formulation:	PBS containing 0.02% sodium azide.
Purification:	Affinity chromatography purified via peptide column
Conjugation:	Unconjugated
Storage:	Store at -20°C as received.
Stability:	Stable for 12 months from date of receipt.
Gene Name:	Ras homolog enriched in brain
Database Link:	AAH16155 Entrez Gene 6009 Human Q15382

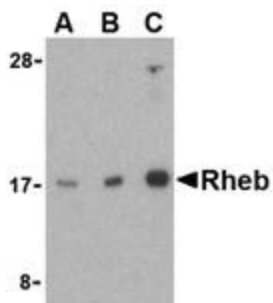
Background: Rheb (Ras homolog enriched in brain) is an evolutionarily conserved member of the Ras family of small GTP-binding proteins originally found to be rapidly induced by synaptic activity in the hippocampus following seizure (1). While it is expressed at relatively high levels in the brain, Rheb is widely expressed in other tissues and may be induced by growth factor stimulation. Similar to other family members, Rheb triggers activation of the Raf-MEK-MAPK pathway (2). Biochemical and genetic studies demonstrate that Rheb has an important role in regulating the insulin/Target of rapamycin (TOR) signaling pathway (3-5). TOR is a serine/threonine protein kinase that acts as a sensor for ATP and amino acids, balancing the availability of nutrients with protein translation and cell growth. A dimeric protein complex termed TSC1/TSC2 indirectly inhibits TOR activity by inhibiting Rheb via the GAP activity of TSC2 (3).



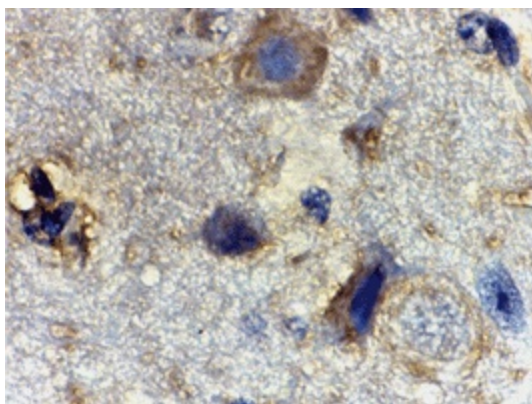
[View online »](#)

Synonyms: RHEB2

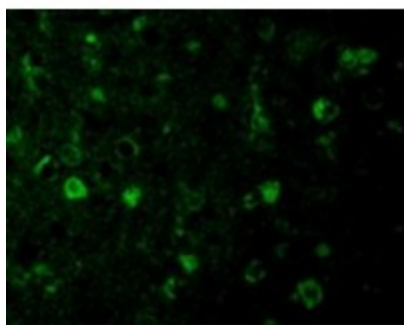
Product images:



Western blot analysis of Rheb in mouse brain cell lysate with Rheb antibody at (A) 1, (B) 2, and (C) 4 ug/ml.



Immunohistochemistry of Rheb in mouse brain tissue with Rheb antibody at 2 ug/ml.



Immunofluorescence of Rheb in Mouse Brain cells with Rheb antibody at 20 ug/mL.