

Product datasheet for **TA306206**

Caspase 8 (CASP8) Rabbit Polyclonal Antibody

Product data:

Product Type:	Primary Antibodies
Applications:	WB
Recommended Dilution:	WB: 1 ug/mL
Reactivity:	Human, Mouse
Host:	Rabbit
Isotype:	IgG
Clonality:	Polyclonal
Immunogen:	Caspase-8 antibody was raised against a 15 amino acid peptide from near the carboxy terminus human caspase-8 isoform E.
Formulation:	PBS containing 0.02% sodium azide.
Concentration:	1ug/ul
Purification:	Affinity chromatography purified via peptide column
Conjugation:	Unconjugated
Storage:	Store at -20°C as received.
Stability:	Stable for 12 months from date of receipt.
Gene Name:	caspase 8
Database Link:	NP_203522 Entrez Gene 841 Human Q14790



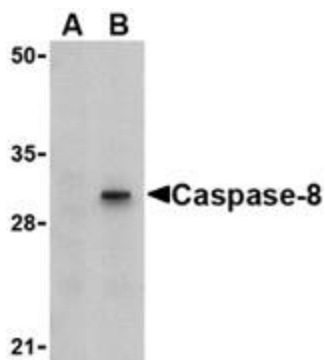
[View online »](#)

Background:

Caspases are a family of cysteine proteases that can be divided into the apoptotic and inflammatory caspase subfamilies. Unlike the apoptotic caspases, members of the inflammatory subfamily are generally not involved in cell death but are associated with the immune response to microbial pathogens (reviewed in 1 and 2). The apoptotic subfamily can be further divided into initiator caspases, which are activated in response to death signals, and executioner caspases, which are activated by the initiator caspases and are responsible for cleavage of cellular substrates that ultimately lead to cell death (reviewed in 3). Caspase-8 is an initiator caspase that was identified as a member of the Fas/APO-1 death-inducing signaling complex (4). The adaptor molecule FADD couples procaspase-8 to the Fas receptor death domain; subsequent oligomerization promotes procaspase-8 autoactivation (reviewed in 5). FLIP, a catalytically inactive caspase-8-like molecule inhibits these interactions and thus can inhibit apoptosis (6). This antibody will only detect isoform E of caspase-8.

Synonyms:

ALPS2B; CAP4; Casp-8; FLICE; MACH; MCH5

Product images:

Western blot analysis of Caspase-8 in HT-29 cell lysate with Caspase-8 antibody (1N) at 1 ug/ml in (A) the presence or (B) the absence of blocking peptide.