

## Product datasheet for **TA306204**

### Caspase-6 (CASP6) Rabbit Polyclonal Antibody

#### Product data:

Product Type:	Primary Antibodies
Applications:	IF, WB
Recommended Dilution:	WB: 0.5 - 2 ug/mL, ICC: 2 ug/mL
Reactivity:	Human
Host:	Rabbit
Isotype:	IgG
Clonality:	Polyclonal
Immunogen:	Caspase-6 antibody was raised against a 15 amino acid peptide from near the amino-terminus of human Caspase-6.
Formulation:	PBS containing 0.02% sodium azide.
Concentration:	1ug/ul
Purification:	Affinity chromatography purified via peptide column
Conjugation:	Unconjugated
Storage:	Store at -20°C as received.
Stability:	Stable for 12 months from date of receipt.
Gene Name:	caspase 6
Database Link:	<a href="#">NP_001217</a> <a href="#">Entrez Gene 839 Human</a> <a href="#">P55212</a>

[View online »](#)

**Background:**

Caspases are a family of cysteine proteases that can be divided into the apoptotic and inflammatory caspase subfamilies. Unlike the apoptotic caspases, members of the inflammatory subfamily are generally not involved in cell death but are associated with the immune response to microbial pathogens (reviewed in 1 and 2). The apoptotic subfamily can be further divided into initiator caspases, which are activated in response to death signals, and executioner caspases, which are activated by the initiator caspases and are responsible for cleavage of cellular substrates that ultimately lead to cell death (reviewed in 3). Caspase-6 is an executioner caspase that was identified based on its homology with human caspases 2 and 3 as well as the *C. elegans* cell death protein CED-3 (4). It possesses two isoforms, of which only the longer form possesses protease activity (4). Caspase-6 is highly expressed in adult brain and may play a role in several neuronal pathologies (5).

**Synonyms:**

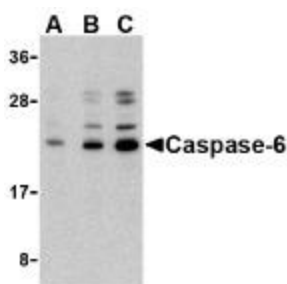
MCH2

**Protein Families:**

Druggable Genome, Protease, Stem cell - Pluripotency

**Protein Pathways:**

Apoptosis

**Product images:**


Western blot analysis of caspase-6 in Jurkat cell lysate with caspase-6 antibody at (A) 0.5, (B) 1, and (C) 2 ug/mL.



Immunocytochemistry of caspase-6 in Jurkat cells with caspase-6 antibody at 2 ug/mL.