

Product datasheet for **TA306203**

Caspase-6 (CASP6) Rabbit Polyclonal Antibody

Product data:

Product Type:	Primary Antibodies
Applications:	IF, WB
Recommended Dilution:	WB: 1 - 2 ug/mL, ICC: 1 ug/mL, IF: 10 ug/mL
Reactivity:	Human
Host:	Rabbit
Isotype:	IgG
Clonality:	Polyclonal
Immunogen:	Caspase-6 antibody was raised against a 15 amino acid peptide from near the center of human Caspase-6.
Formulation:	PBS containing 0.02% sodium azide.
Concentration:	1ug/ul
Purification:	immunoaffinity purified
Conjugation:	Unconjugated
Storage:	Store at -20°C as received.
Stability:	Stable for 12 months from date of receipt.
Gene Name:	caspase 6
Database Link:	NP_001217 Entrez Gene 839 Human P55212



[View online »](#)

Background:

Caspases are a family of cysteine proteases that can be divided into the apoptotic and inflammatory caspase subfamilies. Unlike the apoptotic caspases, members of the inflammatory subfamily are generally not involved in cell death but are associated with the immune response to microbial pathogens (reviewed in 1 and 2). The apoptotic subfamily can be further divided into initiator caspases, which are activated in response to death signals, and executioner caspases, which are activated by the initiator caspases and are responsible for cleavage of cellular substrates that ultimately lead to cell death (reviewed in 3). Caspase-6 is an executioner caspase that was identified based on its homology with human caspases 2 and 3 as well as the *C. elegans* cell death protein CED-3 (4). It possesses two isoforms, of which only the longer form possesses protease activity (4). Caspase-6 is highly expressed in adult brain and may play a role in several neuronal pathologies (5).

Synonyms:

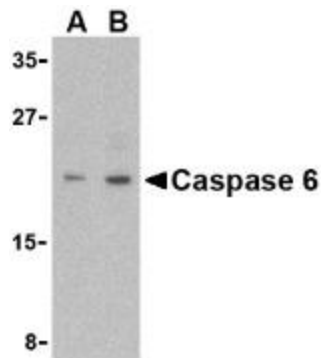
MCH2

Protein Families:

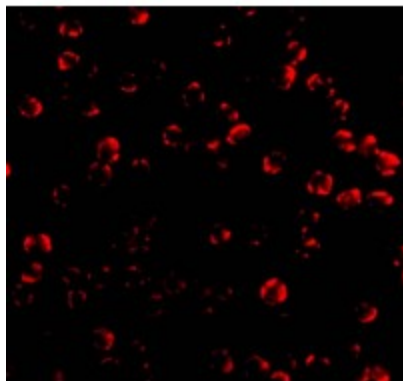
Druggable Genome, Protease, Stem cell - Pluripotency

Protein Pathways:

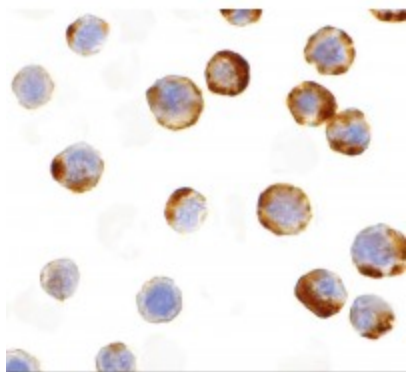
Apoptosis

Product images:

Western blot analysis of Caspase-6 in MCF7 cell lysate with Caspase-6 antibody (IN) at (A) 1 and (B) 2 ug/mL.



Immunofluorescence of Caspase 6 in MCF7 cells with Caspase 6 antibody at 10 ug/mL.



Immunocytochemistry of caspase-6 in MCF7 with caspase-6 antibody at 1 ug/mL.