

Product datasheet for **TA306201**

Caspase-7 (CASP7) Rabbit Polyclonal Antibody

Product data:

Product Type:	Primary Antibodies
Applications:	IHC, WB
Recommended Dilution:	WB: 0.5 - 1 ug/mL, ICC: 2 ug/mL
Reactivity:	Human, Mouse, Rat
Host:	Rabbit
Isotype:	IgG
Clonality:	Polyclonal
Immunogen:	Caspase-7 antibody was raised against a 16 amino acid peptide from near the carboxy-terminus of human Caspase-7.
Formulation:	PBS containing 0.02% sodium azide.
Concentration:	1ug/ul
Purification:	Affinity chromatography purified via peptide column
Conjugation:	Unconjugated
Storage:	Store at -20°C as received.
Stability:	Stable for 12 months from date of receipt.
Gene Name:	caspase 7
Database Link:	NP_001218 Entrez Gene 12369 Mouse Entrez Gene 64026 Rat Entrez Gene 840 Human P55210



[View online »](#)

Background:

Caspases are a family of cysteine proteases that can be divided into the apoptotic and inflammatory caspase subfamilies. Unlike the apoptotic caspases, members of the inflammatory subfamily are generally not involved in cell death but are associated with the immune response to microbial pathogens (reviewed in 1 and 2). The apoptotic subfamily can be further divided into initiator caspases, which are activated in response to death signals, and executioner caspases, which are activated by the initiator caspases and are responsible for cleavage of cellular substrates that ultimately lead to cell death (reviewed in 3). Caspase-7 is an executioner caspase that was identified based on its homology with caspases 1 and 3, as well as the *C. elegans* cell death protein CED-3 (4). Alternative splicing of Caspase-7 mRNA results in the production of 3 distinct isoforms (4). Caspase-7 activity can be directly inhibited by XIAP expression (5).

Synonyms:

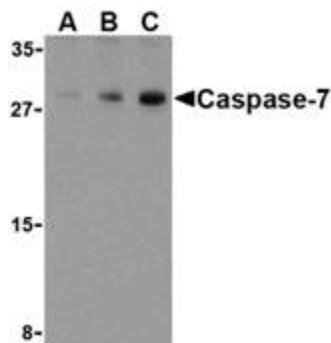
CASP-7; CMH-1; ICE-LAP3; LICE2; MCH3

Protein Families:

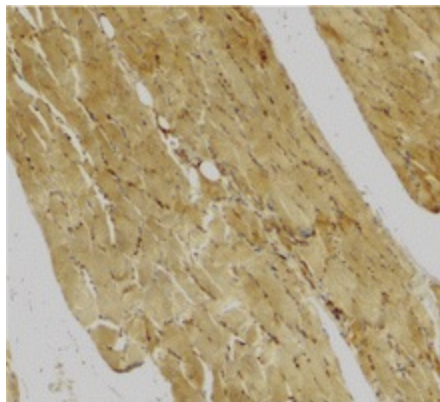
Druggable Genome, Protease

Protein Pathways:

Alzheimer's disease, Apoptosis

Product images:

Western blot analysis of Caspase-7 in human skeletal muscle cell lysate with Caspase-7 antibody at (A) 0.5, (B) 1, and (C) 2 ug/ml.



Immunohistochemical staining of human skeletal muscle using caspase-7 antibody at 2 ug/ml.