

Product datasheet for **TA306200**

Caspase 1 (CASP1) Rabbit Polyclonal Antibody

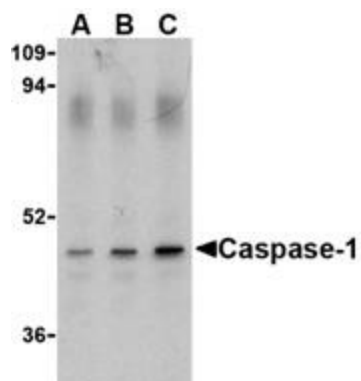
Product data:

Product Type:	Primary Antibodies
Applications:	IF, IHC, WB
Recommended Dilution:	WB: 0.5 - 2 ug/mL, ICC: 10 ug/mL, IF: 20 ug/mL
Reactivity:	Human
Host:	Rabbit
Isotype:	IgG
Clonality:	Polyclonal
Immunogen:	Caspase-1 antibody was raised against a 15 amino acid peptide from near the middle of human Caspase-1.
Formulation:	PBS containing 0.02% sodium azide.
Purification:	Affinity chromatography purified via peptide column
Conjugation:	Unconjugated
Storage:	Store at -20°C as received.
Stability:	Stable for 12 months from date of receipt.
Gene Name:	caspase 1
Database Link:	NP_150634 Entrez Gene 834 Human P29466
Background:	Caspases are a family of cysteine proteases that can be divided into the apoptotic and inflammatory caspase subfamilies. Unlike the apoptotic caspases, members of the inflammatory subfamily are generally not involved in cell death but are associated with the immune response to microbial pathogens (reviewed in 1 and 2). Members of this subfamily include caspase-1, -4, -5, and -12 and can activate proinflammatory cytokines such as IL-1? and IL-18 (3,4). Caspase-1 was initially identified as an IL-1 beta-converting enzyme (5); later experiments revealed it to be a mammalian homolog of the C. elegans cell death gene ced-3 (6) whose overexpression can induce apoptosis in fibroblasts (7).
Synonyms:	ICE; IL1BC; P45

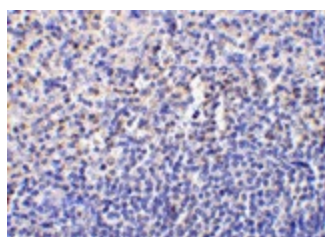


[View online »](#)

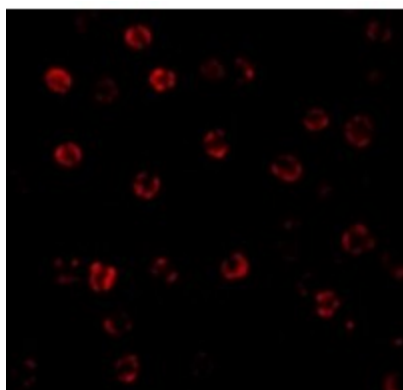
Product images:



Western blot analysis of Caspase-1 in HeLa cell lysate with Caspase-1 antibody (IN) at (A) 0.5, (B) 1, and (C) 2 ug/ml.



Immunohistochemistry of caspase-1 in human spleen tissue with caspase-1 antibody at 10 ug/ml.



Immunofluorescence of Caspase-1 in HeLa cells with Caspase-1 antibody at 20 ug/mL.