

Product datasheet for **TA306196**

Caspase 4 (CASP4) Rabbit Polyclonal Antibody

Product data:

Product Type:	Primary Antibodies
Applications:	IF, IHC, WB
Recommended Dilution:	WB: 1 - 2 ug/mL, ICC: 2 ug/mL, IF: 10 ug/mL
Reactivity:	Human
Host:	Rabbit
Isotype:	IgG
Clonality:	Polyclonal
Immunogen:	Caspase-4 antibody was raised against a 15 amino acid peptide from near the center of human Caspase-4.
Formulation:	PBS containing 0.02% sodium azide.
Concentration:	1ug/ul
Purification:	Affinity chromatography purified via peptide column
Conjugation:	Unconjugated
Storage:	Store at -20°C as received.
Stability:	Stable for 12 months from date of receipt.
Gene Name:	caspase 4
Database Link:	AAA86890 Entrez Gene 837 Human P49662



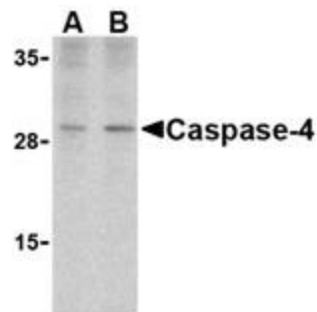
[View online »](#)

Background:

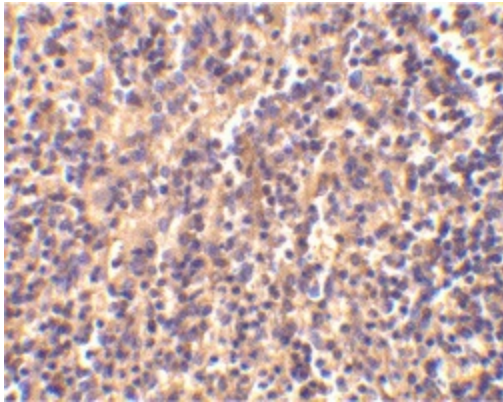
Caspases are a family of cysteine proteases that can be divided into the apoptotic and inflammatory caspase subfamilies. Unlike the apoptotic caspases, members of the inflammatory subfamily are generally not involved in cell death but are associated with the immune response to microbial pathogens (reviewed in 1). Members of this subfamily include caspase-1, -4, -5, and -12. Activation of these caspases results in the cleavage and activation of proinflammatory cytokines such as IL-1beta and IL-18 (2,3). Caspase-4 was initially identified as a homologous protein to Caspase-1 and the *C. elegans* Ced-3 which could induce apoptosis in transfected cells (4). More recent studies have shown that it can be activated by ER stress and has been suggested to be involved in multiple neuronal pathologies such as Alzheimer's disease (5).

Synonyms:

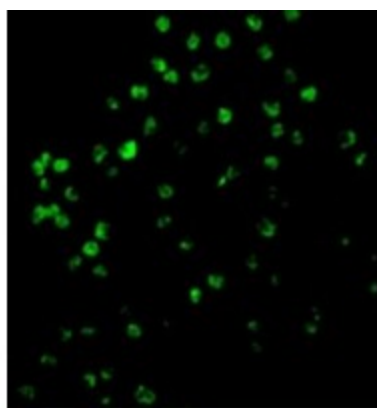
ICE(rel)II; ICEREL-II; ICH-2; Mih1; TX

Product images:

Western blot analysis of caspase-4 in human spleen cells with caspase-4 antibody at (A) 1 and (B) 2 ug/ml.



Immunohistochemical staining of human spleen tissue using caspase-4 antibody at 2 ug/ml.



Immunofluorescence of Caspase-4 in A20 cells with Caspase-4 antibody at 10 ug/mL.