

## Product datasheet for **TA306194**

### Caspase 2 (CASP2) Rabbit Polyclonal Antibody

#### Product data:

Product Type:	Primary Antibodies
Applications:	IF, WB
Recommended Dilution:	WB: 0.5 - 2 ug/mL, ICC: 2 ug/mL
Reactivity:	Human, Mouse
Host:	Rabbit
Isotype:	IgG
Clonality:	Polyclonal
Immunogen:	Caspase-2 antibody was raised against a 16 amino acid peptide from the amino-terminus of human Caspase-2.
Formulation:	PBS containing 0.02% sodium azide.
Concentration:	1ug/ul
Purification:	Affinity chromatography purified via peptide column
Conjugation:	Unconjugated
Storage:	Store at -20°C as received.
Stability:	Stable for 12 months from date of receipt.
Gene Name:	caspase 2
Database Link:	<a href="#">NP_001215</a> <a href="#">Entrez Gene 12366 Mouse</a> <a href="#">Entrez Gene 835 Human</a> <a href="#">P42575</a>

**Background:** Caspases are a family of cysteine proteases that can be divided into the apoptotic and inflammatory caspase subfamilies. Unlike the apoptotic caspases, members of the inflammatory subfamily are generally not involved in cell death but are associated with the immune response to microbial pathogens (reviewed in 1 and 2). Members of this subfamily include caspase-1, -4, -5, and -12 and can activate proinflammatory cytokines such as IL-1beta and IL-18 (3,4). Although phylogenetically similar to this subfamily, Caspase-2 is thought to be involved in stress-induced apoptosis (5). Caspase-2 has two major isoforms; overexpression on the long form results in apoptosis while that of the short form suppresses cell death (6).

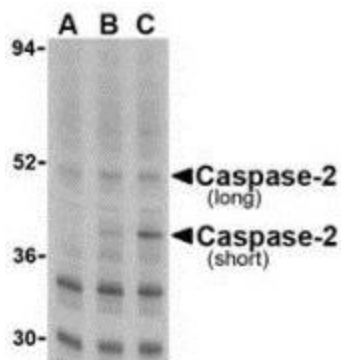


[View online »](#)

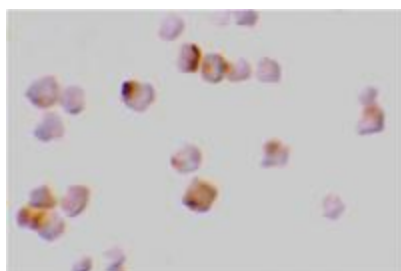
**Synonyms:** CASP-2; ICH1; NEDD-2; NEDD2; PPP1R57

**Protein Families:** Druggable Genome, Protease

**Product images:**



Western blot analysis of caspase-2 in Ramos cells with caspase-2 antibody at (A) 0.5, (B) 1, and (C) 2 ug/mL.



Immunocytochemistry of caspase-2 in A-20 cells with caspase-2 antibody at 2 ug/mL.