

Product datasheet for **TA306192**

Bim (BCL2L11) Rabbit Polyclonal Antibody

Product data:

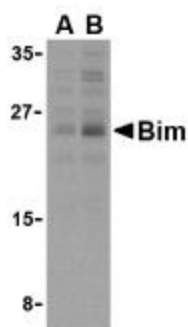
Product Type:	Primary Antibodies
Applications:	IF, WB
Recommended Dilution:	WB: 2.5 - 5 ug/mL, ICC: 10 ug/mL, IF: 20 ug/mL
Reactivity:	Human, Mouse, Rat
Host:	Rabbit
Isotype:	IgG
Clonality:	Polyclonal
Immunogen:	Bim antibody was raised against a peptide corresponding to amino acids near the center of human Bim The sequence is identical to that of mouse and rat.
Formulation:	PBS containing 0.02% sodium azide.
Concentration:	1ug/ul
Purification:	Affinity chromatography purified via peptide column
Conjugation:	Unconjugated
Storage:	Store at -20°C as received.
Stability:	Stable for 12 months from date of receipt.
Gene Name:	BCL2 like 11
Database Link:	NP_006529 Entrez Gene 12125 Mouse Entrez Gene 64547 Rat Entrez Gene 10018 Human O43521
Background:	Members in the Bcl-2 family are critical regulators of apoptosis by either inhibiting or promoting cell death. Bcl-2 homology 3 (BH3) domain is a potent death domain. BH3 domain containing pro-apoptotic proteins, including Bad, Bax, Bid, Bik, and Hrk, form a growing subclass of the Bcl-2 family. A novel BH3 domain containing protein was recently identified and designated Bim or BOD in human, mouse and rat (1,2). Bim/BOD interacts with diverse members in the pro-survival Bcl-2 sub-family including Bcl-2, Bcl-xL and Bcl-w. Bim/BOD induces apoptosis. The messenger RNA of Bim is ubiquitously expressed in multiple tissues and cell lines (1,2).
Synonyms:	BAM; BIM; BOD



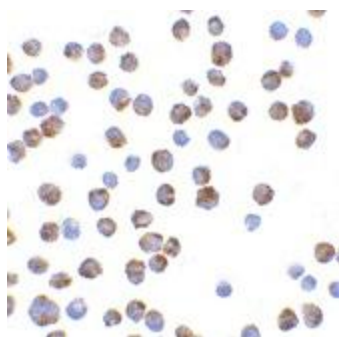
[View online »](#)

Protein Families: Druggable Genome

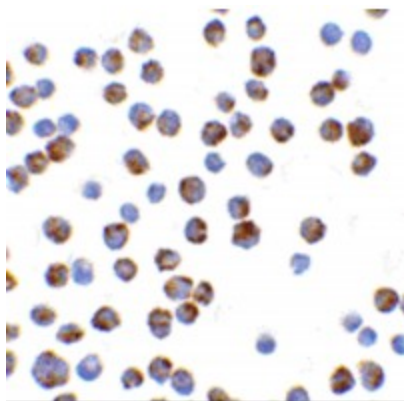
Product images:



Western blot analysis of Bim in K562 cell lysates with Bim antibody (IN2) at (A) 2.5 and (B) 5 ug/mL.



Immunocytochemistry of BIM in K562 cells with Bim antibody at 10 ug/mL.



Immunocytochemistry of BIM in K562 cells with Bim antibody at 10 ug/mL.