

Product datasheet for **TA306191**

IRF8 Rabbit Polyclonal Antibody

Product data:

Product Type:	Primary Antibodies
Applications:	IF, WB
Recommended Dilution:	WB: 1 ug/mL, IF: 10 ug/mL
Reactivity:	Human, Mouse, Rat
Host:	Rabbit
Isotype:	IgG
Clonality:	Polyclonal
Immunogen:	IRF8 antibody was raised against a peptide corresponding to 16 amino acids near the carboxy-terminus of human IRF8.
Formulation:	PBS containing 0.02% sodium azide.
Concentration:	1ug/ul
Purification:	Affinity chromatography purified via peptide column
Conjugation:	Unconjugated
Storage:	Store at -20°C as received.
Stability:	Stable for 12 months from date of receipt.
Gene Name:	interferon regulatory factor 8
Database Link:	NP_001562 Entrez Gene 3394 Human Q02556

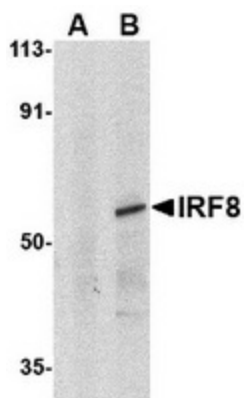
Background: Interferons (IFN)s are involved in a multitude of immune interactions during viral infections and play a major role in both the induction and regulation of innate and adaptive antiviral mechanisms (1 for review). During infection, host-virus interactions signal downstream molecules such as transcription factors such as IFN regulatory factor-3 (IRF3) which can act to stimulate transcription of IFN-alpha/beta genes. Unlike IRF3, IRF8 appears to act as a negative regulator of IFN-induced genes in most cases (2,3), but IRF8 mediates activation of NF-kappaB by the toll-like receptor 9 (TLR9) after stimulation by unmethylated CpG DNA in dendritic cells (4,5). Finally, it has been shown that IRF8 decreases bcl-2 expression and thus may play a role in chronic myelogenous leukemia (6).



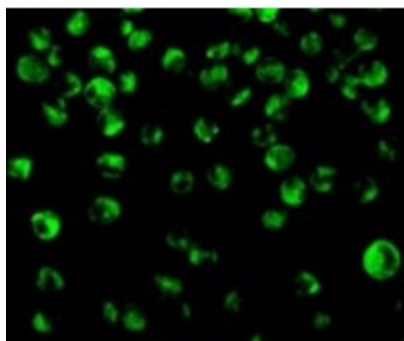
[View online »](#)

Synonyms: interferon regulatory factor 3; MGC94729

Product images:



Western blot analysis of IRF8 in human thymus tissue lysate with IRF8 antibody at 1ug/ml in (A) the presence and (B) absence of blocking peptide.



Immunofluorescence of IRF8 in K562 cells with IRF8 antibody at 10 ug/mL.