

Product datasheet for **TA306188**

BTK Rabbit Polyclonal Antibody

Product data:

Product Type:	Primary Antibodies
Applications:	IF, WB
Recommended Dilution:	WB: 0.5 - 2 ug/mL, ICC: 10 ug/mL, IF: 10 ug/mL
Reactivity:	Human, Mouse
Host:	Rabbit
Isotype:	IgG
Clonality:	Polyclonal
Immunogen:	BTK antibody was raised against a synthetic peptide corresponding to 16 amino acids near the amino-terminus of human BTK.
Formulation:	PBS containing 0.02% sodium azide.
Concentration:	1ug/ul
Purification:	Affinity chromatography purified via peptide column
Conjugation:	Unconjugated
Storage:	Store at -20°C as received.
Stability:	Stable for 12 months from date of receipt.
Gene Name:	Bruton tyrosine kinase
Database Link:	NP_000052 Entrez Gene 12229 Mouse Entrez Gene 695 Human Q06187

Background: Bruton's tyrosine kinase (BTK) was initially identified as a member of the src family for protein-tyrosine kinases that was involved in X-linked agammaglobulinemia (1), and has since been shown to be involved in a number of signaling pathways in hematopoietic lineage (reviewed in 2). It has recently been shown to interact with members of the toll-like receptor (TLR) family such as TLR4, 6, 8, and 9 (3). The TLRs are critical molecules in both the innate and adaptive immunity and can recognize diverse microbial pathogens (reviewed in 4). BTK has also been shown to interact with key proteins involved in TLR4 signal transduction such as MyD88, TIRAP, and IRAK, but not TRAF-6, suggesting that BTK is involved in lipopolysaccharide signal transduction (3).



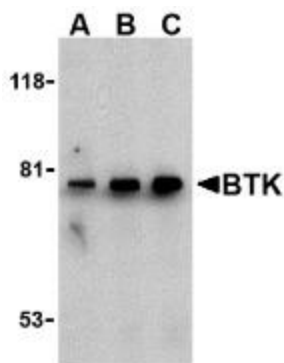
[View online »](#)

Synonyms: AGMX1; AT; ATK; BPK; IMD1; PSCTK1; XLA

Protein Families: Druggable Genome, Protein Kinase

Protein Pathways: B cell receptor signaling pathway, Fc epsilon RI signaling pathway, Primary immunodeficiency

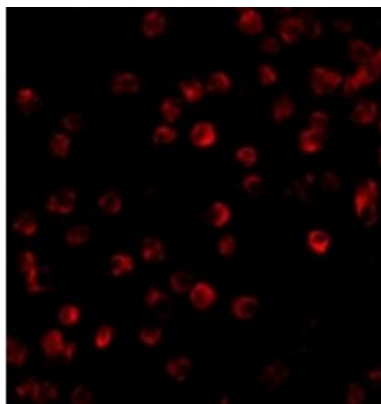
Product images:



Western blot analysis of BTK in U937 cell lysate with BTK antibody at (A) 0.5, (B) 1, and (C) 2 ug/mL.



Immunocytochemistry of BTK in Daudi cells with BTK antibody at 10 ug/mL.



Immunofluorescence of BTK in Daudi cells with BTK antibody at 10 ug/mL.