

Product datasheet for **TA306187**

TAB1 Rabbit Polyclonal Antibody

Product data:

Product Type:	Primary Antibodies
Applications:	IF, WB
Recommended Dilution:	WB: 0.5 - 2 ug/mL, ICC: 1 ug/mL, IF: 2 ug/mL
Reactivity:	Human, Mouse
Host:	Rabbit
Isotype:	IgG
Clonality:	Polyclonal
Immunogen:	TAB1 antibody was raised against a synthetic peptide corresponding to 13 amino acids in the center of human TAB1.
Formulation:	PBS containing 0.02% sodium azide.
Concentration:	1ug/ul
Purification:	Affinity chromatography purified via peptide column
Conjugation:	Unconjugated
Storage:	Store at -20°C as received.
Stability:	Stable for 12 months from date of receipt.
Gene Name:	TGF-beta activated kinase 1/MAP3K7 binding protein 1
Database Link:	NP_006107 Entrez Gene 66513 Mouse Entrez Gene 10454 Human Q15750
Background:	TAB1 was identified as a regulator of the MAP kinase kinase kinase TAK1/MAP3K7 (1), which is known to mediate various intracellular signaling pathways, such as those induced by TGF-beta and members of the Toll-IL-1R (TIR) superfamily (2), thus acting as an intermediate in both proliferative and innate and adaptive immune responses (3). This protein, together with either TAB2 or TAB3, activates TAK1 kinase in response to upstream signals (4,5). It has been shown that the C-terminal portion of TAB1 is sufficient for binding and activation of TAK1, while a portion of the N-terminus acts as a dominant-negative inhibitor of TGF-beta, demonstrating how this protein can function as a mediator between TGF-beta receptors and TAK1 (6).



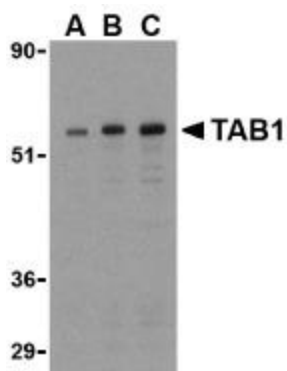
[View online »](#)

Synonyms: 3-Tab1; 3'-Tab1; MAP3K7IP1

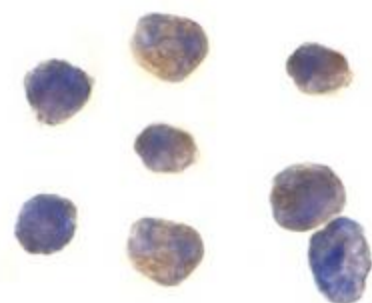
Protein Families: Druggable Genome

Protein Pathways: MAPK signaling pathway, NOD-like receptor signaling pathway, Toll-like receptor signaling pathway

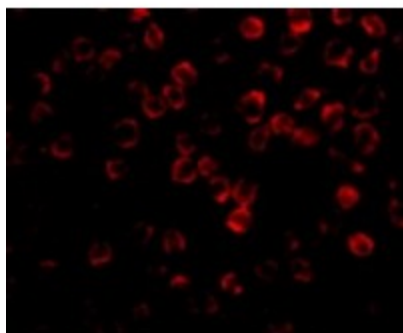
Product images:



Western blot analysis of TAB1 in 3T3 cell lysate with TAB1 antibody at (A) 0.5, (B) 1, and (C) 2 ug/mL.



Immunocytochemistry of TAB1 in K562 cells with TAB1 antibody at 1 ug/mL.



Immunofluorescence of TAB1 in 3T3 cells with TAB1 antibody at 2 ug/mL.