

Product datasheet for **TA306184**

UBE2V1 Rabbit Polyclonal Antibody

Product data:

Product Type:	Primary Antibodies
Applications:	WB
Recommended Dilution:	WB: 1 - 4 ug/mL
Reactivity:	Human, Mouse, Rat
Host:	Rabbit
Isotype:	IgG
Clonality:	Polyclonal
Immunogen:	UEV1A antibody was raised against a peptide corresponding to 15 amino acids near the C-terminus of human UEV1A.
Formulation:	PBS containing 0.02% sodium azide.
Concentration:	1ug/ul
Purification:	Ion exchange chromatography purified
Conjugation:	Unconjugated
Storage:	Store at -20°C as received.
Stability:	Stable for 12 months from date of receipt.
Gene Name:	ubiquitin conjugating enzyme E2 V1
Database Link:	NP_954595 Entrez Gene 7335 Human Q13404



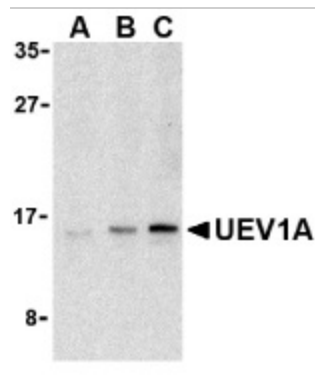
[View online »](#)

Background:

Ubiquitin-conjugating enzyme E2 (UEV1) was initially discovered as a protein similar in sequence and structure to the E2 ubiquitin-conjugating enzymes but lacking their enzymatic activity (1). There are at least two variants and multiple isoforms of UEV1. In particular, UEV1A (Ubiquitin-conjugating enzyme E2 variant 1 isoform A) has recently been shown to be an important component of the Toll-like receptor and IL-1R signaling pathway (reviewed in 2). Signals from these pathways are relayed by a number of downstream molecules such as MyD88 and tumor necrosis factor receptor associated factor (TRAF6), ultimately activating various kinases and transcription factors (2,3). UEV1A is part of a dimeric ubiquitin-conjugating enzyme complex also containing Ubc13 (ubiquitin-conjugating enzyme 13) that together with TRAF6 activates TAK1, a member of the mitogen-activated protein kinase kinase family (4-6). The Ubc13-UEV1A complex also mediates the Lys-63 ubiquitination of TRAF-6, and this ubiquitination is essential for TAK1 activation (5).

Synonyms:

CIR1; CROC-1; CROC1; UBE2V; UEV-1; UEV1; UEV1A

Product images:

Western blot analysis of UEV1A in Jurkat cell lysates with UEV1A antibody at (A) 1, (B) 2, and (C) 4 ug/ml.