

## Product datasheet for **TA306174**

### **BAD Rabbit Polyclonal Antibody**

#### **Product data:**

Product Type:	Primary Antibodies
Applications:	IF, IHC, WB
Recommended Dilution:	WB: 0.5 - 2 ug/mL, ICC: 2 ug/mL, IF: 10 ug/mL
Reactivity:	Human, Mouse, Rat
Host:	Rabbit
Isotype:	IgG
Clonality:	Polyclonal
Immunogen:	Bad antibody was raised against a peptide corresponding to 15 amino acids near the C-terminus of human Bad.
Formulation:	PBS containing 0.02% sodium azide.
Concentration:	1ug/ul
Purification:	Ion exchange chromatography purified
Conjugation:	Unconjugated
Storage:	Store at -20°C as received.
Stability:	Stable for 12 months from date of receipt.
Gene Name:	BCL2 associated agonist of cell death
Database Link:	<a href="#">NP_004313</a> <a href="#">Entrez Gene 12015 Mouse</a> <a href="#">Entrez Gene 64639 Rat</a> <a href="#">Entrez Gene 572 Human</a> <a href="#">Q92934</a>
Background:	Members in the Bcl-2 family are critical regulators of apoptosis by either inhibiting or promoting cell death (reviewed in 1 and 2). Bcl-2 homology 3 (BH3) domain containing pro-apoptotic proteins, such as Bax, Bid, and Bik, form a growing subclass of the Bcl-2 family. Another such protein is the Bcl-2-antagonist of cell death (Bad). Bad regulates apoptosis by forming heterodimers with anti-apoptotic proteins Bcl-2 and Bcl-xL, thereby preventing them from binding with Bax (3). Bad activity is regulated by its phosphorylation; it is inactivated by kinases such as Akt and MAP kinase and thus promotes cell survival (4), whereas JNK-induced phosphorylation promotes the apoptotic role of Bad (5).
Synonyms:	BBC2; BCL2L8

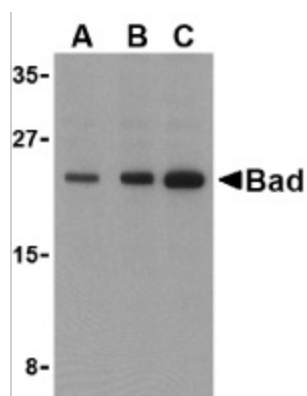


[View online »](#)

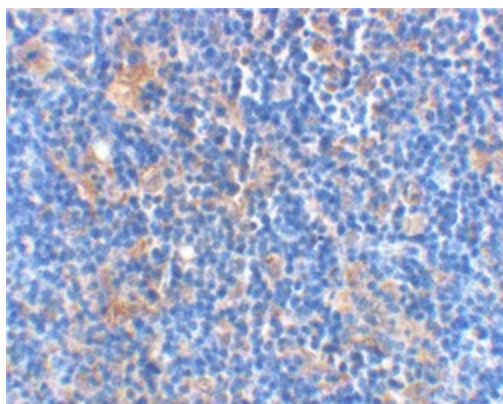
**Protein Families:** Druggable Genome

**Protein Pathways:** Acute myeloid leukemia, Alzheimer's disease, Amyotrophic lateral sclerosis (ALS), Apoptosis, Chronic myeloid leukemia, Colorectal cancer, Endometrial cancer, ErbB signaling pathway, Focal adhesion, Insulin signaling pathway, Melanoma, Neurotrophin signaling pathway, Non-small cell lung cancer, Pancreatic cancer, Pathways in cancer, Prostate cancer, VEGF signaling pathway

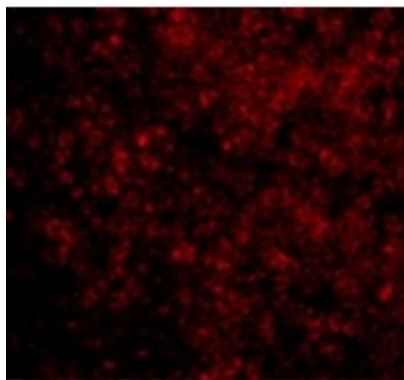
**Product images:**



Western blot analysis of Bad in T24 cell lysates with Bad antibody at (A) 0.5, (B) 1, and (C) 2 ug/ml.



Immunohistochemical staining of rat thymus using anti-Bad at 2 ug/ml.



Immunofluorescence of BAD in Rat Thymus cells with BAD antibody at 10 ug/mL.