

Product datasheet for **TA306173**

Bcl x (BCL2L1) Rabbit Polyclonal Antibody

Product data:

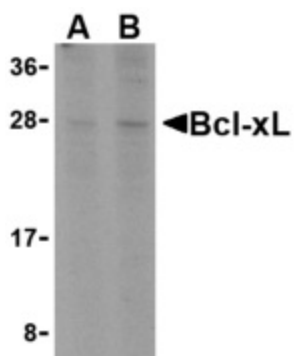
| | |
|-----------------------|--|
| Product Type: | Primary Antibodies |
| Applications: | WB |
| Recommended Dilution: | WB: 1 - 2 ug/mL |
| Reactivity: | Human |
| Host: | Rabbit |
| Isotype: | IgG |
| Clonality: | Polyclonal |
| Immunogen: | Bcl-xL antibody was raised against a peptide corresponding to 14 amino acids near the carboxy-terminus of human Bcl-xL. |
| Formulation: | PBS containing 0.02% sodium azide. |
| Concentration: | 1ug/ul |
| Purification: | Ion exchange chromatography purified |
| Conjugation: | Unconjugated |
| Storage: | Store at -20°C as received. |
| Stability: | Stable for 12 months from date of receipt. |
| Gene Name: | BCL2 like 1 |
| Database Link: | CAA80661 Entrez Gene 598 Human Q07817 |
| Background: | Apoptosis plays a major role in normal organism development, tissue homeostasis, and removal of damaged cells. Disruption of this process has been implicated in a variety of diseases such as cancer (reviewed in 1). Bcl-xL is a member of the Bcl-2 family of proteins that are critical regulators of apoptosis (reviewed in 2 and 3). These can be divided into two classes: those that inhibit apoptosis and those that promote cell death. Bcl-xL is an anti-apoptotic mitochondrial protein related to Bcl-w and the major transcript of the bcl-x gene (4). Its high expression in tumors is correlated with advanced disease and poor prognosis (5). Bcl-xL expression level increases in response to several stimuli such as ionizing radiation and treatment with chemotherapeutic agents (6,7). |



[View online »](#)

Synonyms: Bcl-X; BCL-XL; BCL2L; BCLX; PPP1R52; S

Product images:



Western blot analysis of Bcl-xL in A549 cell lysates with Bcl-xL antibody at (A) 1 and (B) 2 ug/ml.