

## Product datasheet for **TA306161**

### MD2 (LY96) Rabbit Polyclonal Antibody

#### Product data:

Product Type:	Primary Antibodies
Applications:	IF, IHC, WB
Recommended Dilution:	WB: 0.5 - 2 ug/mL, ICC: 2 ug/mL, IF: 10 ug/mL
Reactivity:	Human, Mouse, Rat
Host:	Rabbit
Isotype:	IgG
Clonality:	Polyclonal
Immunogen:	MD-2 antibody was raised against a peptide corresponding to 13 amino acids near the center of human MD-2. The immunogen is located within the last 50 amino acids of MD-2.
Formulation:	PBS containing 0.02% sodium azide.
Concentration:	1ug/ul
Purification:	Ion exchange chromatography purified
Conjugation:	Unconjugated
Storage:	Antibody can be stored at 4°C up to one year. Antibodies should not be exposed to prolonged high temperatures.
Stability:	Stable for 12 months from date of receipt.
Gene Name:	lymphocyte antigen 96
Database Link:	<a href="#">NP_056179</a> <a href="#">Entrez Gene 17087 Mouse</a> <a href="#">Entrez Gene 448830 Rat</a> <a href="#">Entrez Gene 23643 Human</a> <a href="#">Q9Y6Y9</a>
Background:	MD-2 is a member of the Toll/interleukin-1 receptor (TIR) family, a group of proteins that include the Toll-like receptors (TLRs) (1-3). TLRs are signaling molecules that recognize different pathogen-associated molecular patterns (PAMPs) and serve as an important link between the innate and adaptive immune responses (4). TLR4, the major signaling receptor for lipopolysaccharide (LPS), requires the binding of MD-2 to its extracellular region for maximal response to LPS (5,6). The specificity of this response is determined by the species of MD-2; e.g., human MD-2 can cause mouse TLR4 to react to LPS analogs that are normally antagonistic to human but not mouse TLR4 (7).



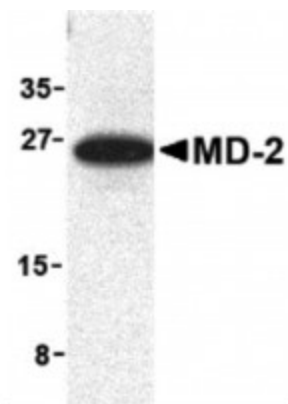
[View online »](#)

**Synonyms:** ESOP-1; ly-96; MD-2; MD2

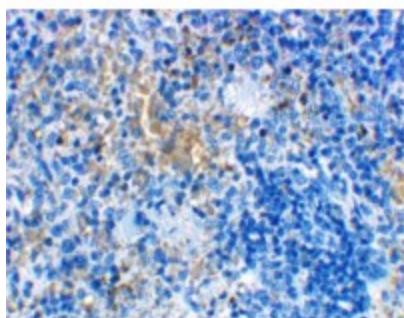
**Protein Families:** Secreted Protein

**Protein Pathways:** Pathogenic Escherichia coli infection, Toll-like receptor signaling pathway

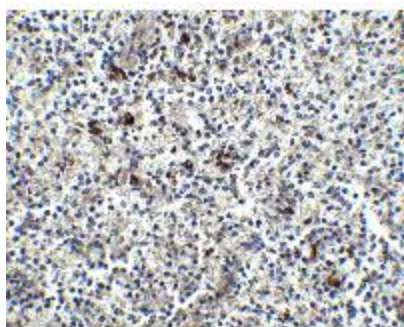
**Product images:**



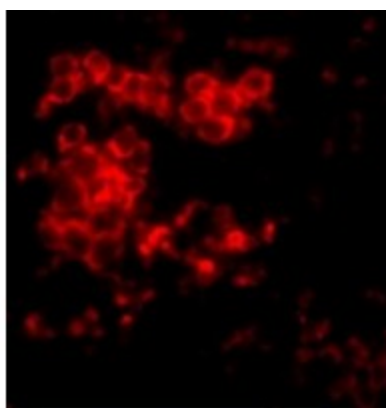
Western blot analysis of MD-2 in mouse spleen cell lysate with MD-2 antibody at 1ug/ml.



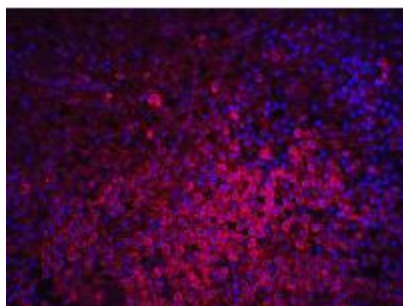
Immunohistochemical staining of rat spleen cells using MD-2 antibody at 2ug/ml.



Immunohistochemistry of MD-2 in human spleen tissue with MD-2 antibody at 2.5ug/ml.



Immunofluorescence of MD-2 in Rat Spleen tissue with MD-2 antibody at 10µg/ml.



Immunofluorescence of MD-2 in human spleen tissue with MD 2 antibody at 20µg/ml.