

## Product datasheet for **TA306158**

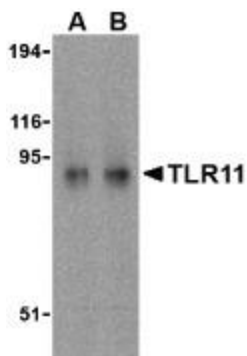
### Tlr11 Rabbit Polyclonal Antibody

#### Product data:

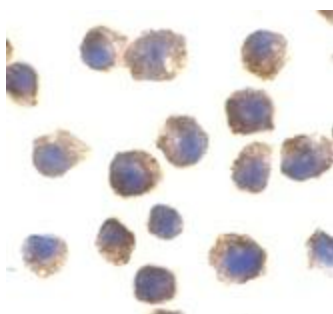
Product Type:	Primary Antibodies
Applications:	IF, WB
Recommended Dilution:	WB: 0.5 - 1 ug/mL, ICC: 2 ug/mL, IF: 10 ug/mL
Reactivity:	Mouse
Host:	Rabbit
Isotype:	IgG
Clonality:	Polyclonal
Immunogen:	TLR11 antibody was raised against a peptide corresponding to 15 amino acids near the carboxy-terminus of mouse TLR11.
Formulation:	PBS containing 0.02% sodium azide.
Concentration:	1ug/ul
Purification:	Ion exchange chromatography purified
Conjugation:	Unconjugated
Storage:	Store at -20°C as received.
Stability:	Stable for 12 months from date of receipt.
Gene Name:	toll-like receptor 11
Database Link:	<a href="#">NP_991388</a> <a href="#">Entrez Gene 239081 Mouse</a> <a href="#">Q6R5P0</a>
Background:	Toll-like receptors (TLRs) are signaling molecules that recognize different microbial products during infection and serve as an important link between the innate and adaptive immune responses (1-3). These proteins act through adaptor molecules such as MyD88 and TIRAP to activate various kinases and transcription factors (4,5). TLR11 is one of three mouse TLRs that lack a human ortholog (6). It is activated specifically by uropathogenic bacteria, and mice lacking TLR11 showed a much greater susceptibility to uropathogenic infections, indicating a potentially important role for TLR11 in preventing infections in the urogenital system (7).
Synonyms:	Gm287; RGD1564460

[View online »](#)

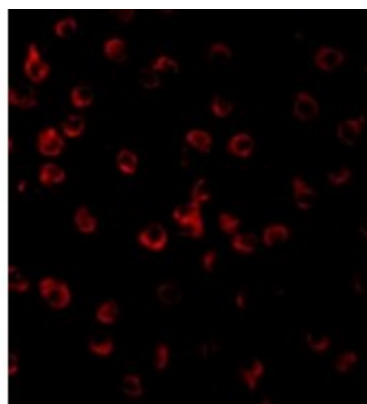
## Product images:



Western blot analysis of TLR11 in RAW264.7 cell lysates with TLR11 antibody at (A) 0.5 and (B) 1 ug/mL.



Immunocytochemical staining of RAW264.7 cells using TLR11 antibody at 2 ug/mL.



Immunofluorescence of TLR11 in Raw264.7 cells with TLR11 antibody at 10 ug/mL.