

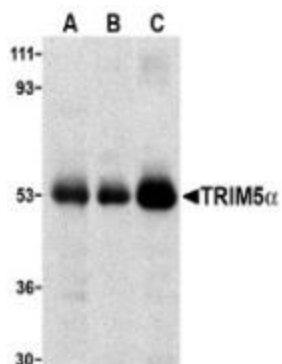
Product datasheet for **TA306153**

TRIM5 Rabbit Polyclonal Antibody

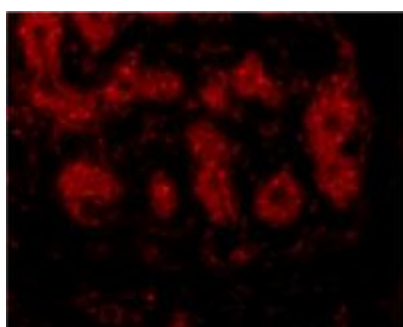
Product data:

Product Type:	Primary Antibodies
Applications:	IF, WB
Recommended Dilution:	WB: 2 ug/mL, IF: 10 ug/mL
Reactivity:	Human
Host:	Rabbit
Isotype:	IgG
Clonality:	Polyclonal
Immunogen:	TRIM5 alpha antibody was raised against a synthetic peptide corresponding to amino acids near the C-terminus of rhesus monkey TRIM5 alpha.
Formulation:	PBS containing 0.02% sodium azide.
Purification:	Affinity chromatography purified via peptide column
Conjugation:	Unconjugated
Storage:	Store at -20°C as received.
Stability:	Stable for 12 months from date of receipt.
Database Link:	ABG67967 Q0PF16
Background:	TRIM5 is a member of a broad family of otherwise unrelated proteins defined by the presence of a tripartite motif containing a RING domain, a B-box type 1, and a B-box type 2, followed by a coiled-coil region (1). TRIM5 has six alternately spliced isoforms, the longest of which is the ? variant which also contains a carboxy-terminal B30.2 (SPRY) domain (1). Expression of TRIM5alpha variants from humans, rhesus monkeys, and African green monkeys enabled resistance to infection by various retroviruses including HIV-1 (2,3), albeit at differing efficiencies. All TRIM5alpha variants could inhibit at least two different retroviruses, but not from those viruses isolated from the same species, suggesting that TRIM5alpha acts as a natural barrier to cross-species retrovirus transmission (3).
Synonyms:	RNF88; TRIM5alpha


[View online »](#)

Product images:


Western blot analysis of TRIM5 alpha expression in human stomach (A), thymus (B), and uterus (C) cell lysate with TRIM5 alpha antibody at 2 ug /ml.



Immunofluorescence of TRIM5 alpha in human breast tissue with TRIM5 alpha antibody at 10 ug/mL.