

Product datasheet for **TA306147**

ACE2 Rabbit Polyclonal Antibody (Angiotensin Converting Enzyme 2)

Product data:

Product Type:	Primary Antibodies
Applications:	IF, IHC, WB
Recommended Dilution:	WB: 0.5 - 2 ug/mL, ICC: 2 ug/mL, IF: 10 ug/mL
Reactivity:	Human
Host:	Rabbit
Isotype:	IgG
Clonality:	Polyclonal
Immunogen:	ACE2 antibody was raised against a synthetic peptide corresponding to amino acids near the C-terminus of human ACE2.
Formulation:	PBS containing 0.02% sodium azide.
Concentration:	1ug/ul
Purification:	Affinity chromatography purified via peptide column
Conjugation:	Unconjugated
Storage:	Antibody can be stored at 4°C up to one year. Antibodies should not be exposed to prolonged high temperatures.
Stability:	Stable for 12 months from date of receipt.
Gene Name:	angiotensin I converting enzyme 2
Database Link:	NP_068576 Entrez Gene 59272 Human Q9BYF1
Background:	Angiotensin-converting enzyme 2 (ACE2) plays a central role in vascular, renal, and myocardial physiology (1-2). In contrast to its homolog ACE, ACE2 expression is restricted to heart, kidney, and testis. Recently, ACE2 has also been shown to be a functional receptor of the SARS coronavirus (3). The normal function of ACE2 is to convert the inactive vasoconstrictor angiotensin I (AngI) to Ang1-9 and the active form AngII to Ang1-7, unlike ACE, which converts AngI to AngII. While the role of these vasoactive peptides is not well understood, lack of ACE2 expression in ace2-/ace2- mice leads to severely reduced cardiac contractility, indicating its importance in regulating heart function (4).



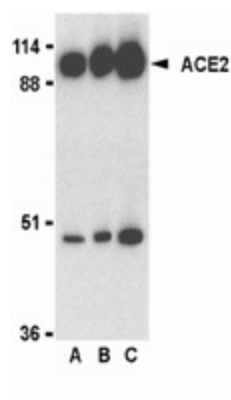
[View online »](#)

Synonyms: ACEH

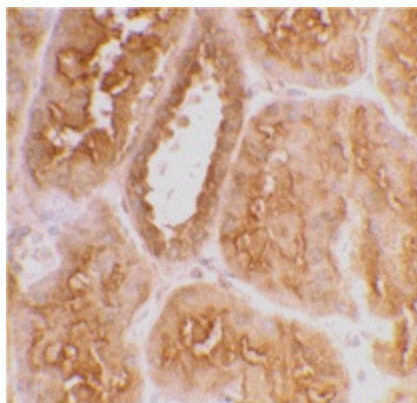
Protein Families: Druggable Genome, Secreted Protein, Transmembrane

Protein Pathways: Renin-angiotensin system

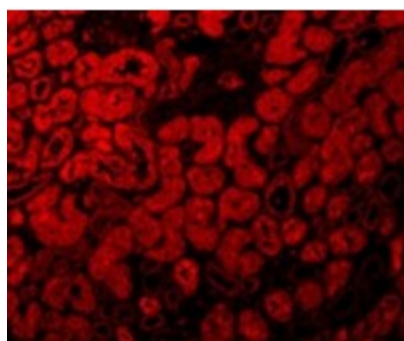
Product images:



Western blot analysis of ACE2 in human kidney lysate with ACE2 antibody at 0.5 (lane A), 1 (lane B), and 2 (lane C) ug/ml, respectively.



Immunohistochemical staining of human kidney tissue using ACE2 antibody at 2 ug/mL



Immunofluorescence of ACE2 in Human Kidney tissue with ACE2 antibody at 10 ug/mL.